



Zululand
District Municipality

**ADJUSTED SERVICE DELIVERY AND BUDGET
IMPLIMENTATION PLAN (SDBIP) FOR THE YEAR
ENDED 30 JUNE 2026**

2025/2026

CONTENTS

1. Introduction

- 1.1 Background to the SDBIP
- 1.2. Purpose of the SDBIP
- 1.3. Importance of SDBIP
- 1.4. The Role of Council with regards to the SDBIP
- 1.5. Role of the Accounting Officer with regards to the SDBIP
- 1.6. Key components of the 2025/26 SDBIP

2. Monthly Projections of Revenue to be collected by Source.

3. Monthly Projections of Expenditure by Source

4. Monthly Projections of Expenditure and Revenue for each vote

5. Quarterly Projections of Service Delivery Targets and Performance Indicators for each vote

6. Detailed Capital Works Plan

7. Approval by the Honourable Mayor

Introduction

1.1. Background to the SDBIP

In terms of Section 69 (3) (a) of the Municipal Finance Management Act, the Municipal Manager must submit the SDBIP to the Mayor within 14 days after the approval of the Budget. The mayor must subsequently approve the SDBIP within 28 days after the approval of the Budget in terms of Section 53 (1) (c) (ii) of the Municipal Finance Management Act. The Final Budget for the 2025/26 financial year was tabled to Council on the 22th of May 2025 for approval. The SDBIP for the Zululand District Municipality was approved by the mayor within 28 days after approval of budget as stated in S53 (1) (c) (ii) and it will be monitored and revised quarterly.

1.2. Purpose of the SDBIP

The purpose of the SDBIP can be summarized as follows:

1. It is a vital link between the mayor and the administration of the municipality.
2. It facilitates the process for holding management accountable for its performance.
3. It is a tool for implementation, management, and monitoring; and
4. It further serves as the basis for the performance measurement in service delivery against the year-end targets and the implementation of the budget.

1.3. Importance of the SDBIP

A properly formulated SDBIP will ensure that appropriate information is circulated internally and externally for purposes of monitoring the execution of the budget, and it:

- *Enables the Mayor to monitor the performance of the Municipal Manager,*
- *Municipal Manager to monitor the performance of the senior managers; and*
- *The community to monitor the performance of the municipality.*

It is the excellent mechanism that produces monthly targets that are reported to ensure implementation of the IDP. The SDBIP will also empower all councillors specifically facilitating engagement at ward level and allow them to undertake the appropriate oversight and monitoring of programs. The SDBIP will also measure in-year progress in the implementation of the budget; under spending of budget will be dealt with at early stages because it is reviewed quarterly.

1.4. The Role of Council with regards to the SDBIP

It is vitally important for Council to note that the components of the SDBIP are primary indicators of the municipality's performance on the annual Budget. In this regard, Councillors are encouraged to scrutinize the various components of the SDBIP and to pose questions where it is deemed necessary. This form of in-year reporting should uncover major problems and is aimed at ensuring that the Mayor and the Municipal Manager take the corrective steps when any unanticipated problems arise.

1.5. Role of the Accounting Officer in respect of the SDBIP

The Accounting Officer must:

1. Implement the Budget.
2. Ensure that spending is in accordance with the Budget and ensure that the expenditure is reduced when revenue is anticipated to be less than projected in the Budget or the SDBIP.
3. Ensure that revenue and expenditure is properly monitored.
4. Prepare an adjustments Budget when necessary; and
5. Submit the draft SDBIP and draft annual performance agreements for the Municipal Manager and all senior managers.

1.6. The key components of the 2025/26 SDBIP

In terms of Circular No. 13 of the MFMA No. 56 of 2003, the SDBIP must contain:

- Monthly projections of revenue to be collected for each source.
- Monthly projections of expenditure by source (not required in terms of this Act).
- Monthly projections of expenditure (operating and capital) and revenue for each vote.
- Quarterly projections of service delivery targets and performance indicators of each vote.
- Detailed capital works plan broken down by ward over three years.
(Capital Plan)

These components of the SDBIP are discussed below.

2 MONTHLY PROJECTIONS OF REVENUE PER SOURCE

In terms of Section 15 of the MFMA, a municipality may, except where otherwise provided in this Act,

- incur expenditure only in terms of the approved Budget; and
- Within the limits of the amounts appropriated for the different votes in the approved Budget.

One of the most important and basic priorities of a municipality is to collect all its revenue as budgeted for, failure to collect the revenue will undermine the municipality's ability to deliver services. The SDBIP contains the monthly projections of revenue to be collected per source for the 2025/26 financial year. The reason for the inclusion of this component of the SDBIP is to ensure that the municipality monitors revenue collected during the quarter as all expenditure to be incurred in terms of the approved Budget must be financed from realistically anticipated revenues to be collected.

The Accounting Officer must monitor the actual revenues received against those projected in the SDBIP and submit explanations of any remedial action to be taken to ensure that projected revenue and expenditure remain within the municipality's approved Budget. This type of information requires the municipality to take urgent remedial steps to ensure it improves on its revenue-collection capacity if it wants to maintain its levels of service delivery and expenditure. The revenue for the financial year 2025/26 is indicated below as follows:

Monthly projections of total Revenue per Source

The municipality will ensure that it has instituted measures to achieve monthly revenue targets for each revenue source. In order to ensure realistic revenue projections and ultimately balanced budgets, the Zululand District Municipality has to have comprehensive, coherent revenue policies that take into account appropriate service delivery levels, standards, ability to pay and collection efforts.

**Monthly Projections of Revenue by Source of
Zululand District Municipality for the year
ended 30 June 2026**

Revenue by Source	Monthly Projections of Revenue by Source												
	JULY	AUGUST	SEPTEMBER	OCTOBER	NOVEMBER	DECEMBER	JANUARY	FEBRUARY	MARCH	APRIL	MAY	JUNE	TOTAL REVENUE
Service Charges: Sale of Water	4 268 081	4 268 081	4 268 081	4 268 081	4 268 081	4 268 081	4 268 081	4 268 081	4 268 081	4 268 081	4 268 081	4 268 081	51 216 972
Service Charges: Sewerage Fees	1 414 899	1 414 899	1 414 899	1 414 899	1 414 899	1 414 899	1 414 899	1 414 899	1 414 899	1 414 899	1 414 899	1 414 899	16 978 783
Sale of Goods and Rendering of Services	125 132	125 132	125 132	125 132	125 132	125 132	125 132	125 132	125 132	125 132	125 132	125 132	1 501 583
Interest earned from Receivables	53 990	53 990	53 990	53 990	53 990	53 990	53 990	53 990	53 990	53 990	53 990	53 990	647 874
Interest earned from Current and Non Current Assets	483 700	483 700	483 700	483 700	483 700	483 700	483 700	483 700	483 700	483 700	483 700	483 700	5 804 399
Rental from Fixed Assets	40 199	40 199	40 199	40 199	40 199	40 199	40 199	40 199	40 199	40 199	40 199	40 199	482 382
Licence and permits	15 370	15 370	15 370	15 370	15 370	15 370	15 370	15 370	15 370	15 370	15 370	15 370	184 443
Operational Revenue	43 253	43 253	43 253	43 253	43 253	43 253	43 253	43 253	43 253	43 253	43 253	43 253	519 039
Fines, penalties and forfeits	21 492	21 492	21 492	21 492	21 492	21 492	21 492	21 492	21 492	21 492	21 492	21 492	257 909
Government Grants and Subsidies - Operating and capital	64 382 914	64 382 914	64 382 914	64 382 914	64 382 914	64 382 914	64 382 914	64 382 914	64 382 914	64 382 914	64 382 914	64 382 914	772 594 972
TOTALS	70 849 031	70 849 031	70 849 031	70 849 031	70 849 031	70 849 031	70 849 031	70 849 031	70 849 031	70 849 031	70 849 031	70 849 031	850 188 386

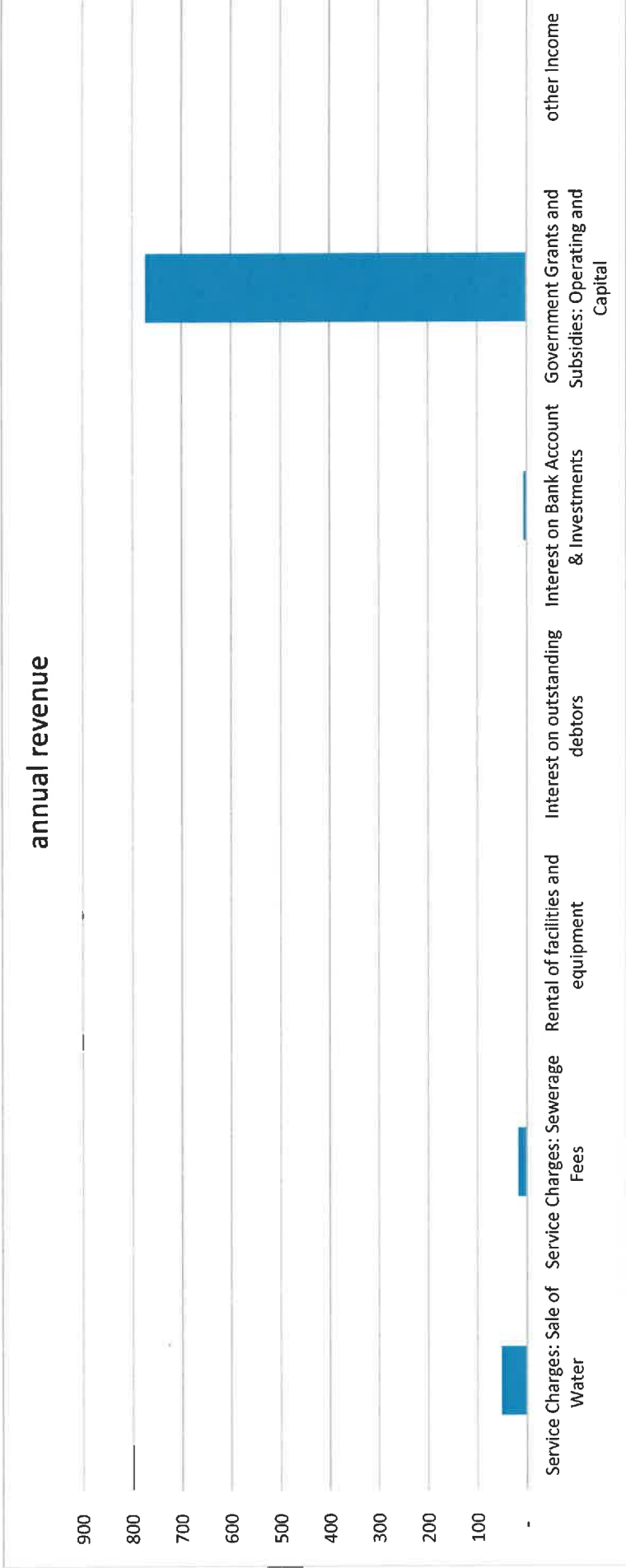


Chart - Projections of Revenue by Source

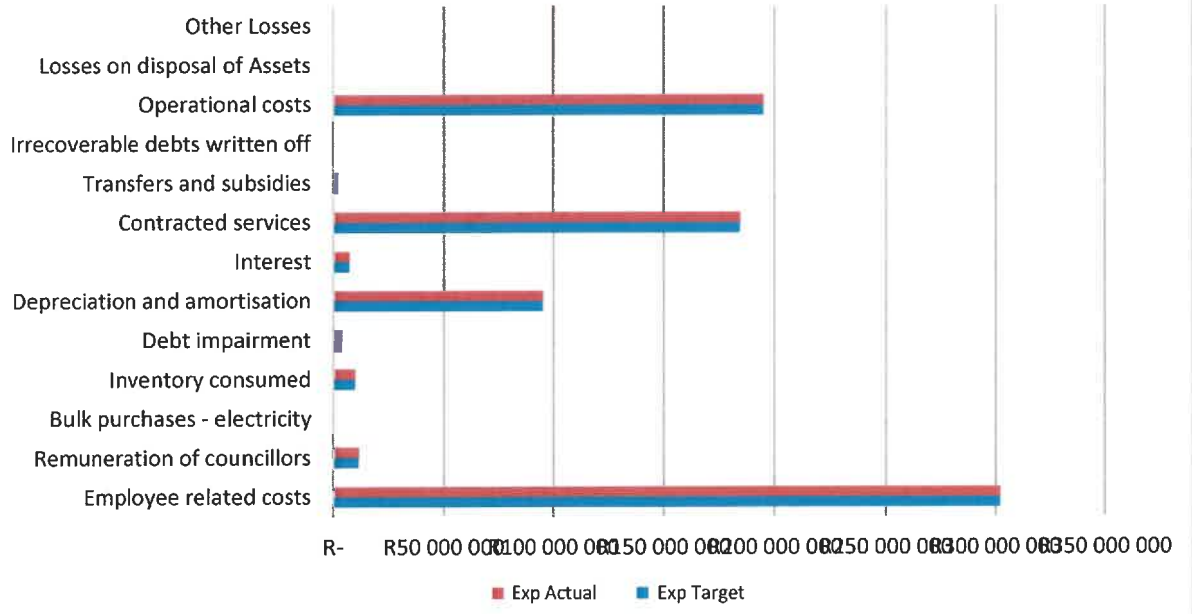
3 MONTHLY PROJECTIONS OF EXPENDITURE PER SOURCE

The monthly projections of expenditure per source is not included in terms of circular No 13 of the MFMA, but we as Zululand District Municipality have decided to add this component in order to see the movement of expenditure per source on monthly basis to be able to respond promptly and to initiate any remedial steps when necessary.

**Monthly Projections of Expenditure by Source of
Zululand District Municipality for the year ended 30 June 2026**

Expenditure by Source	July	August	September	October	November	December	January	February	March	April	May	June	Total
Operating Expenditure													
Employee related costs	25 174 849	25 174 849	25 174 849	25 174 849	25 174 849	25 174 849	25 174 849	25 174 849	25 174 849	25 174 849	25 174 849	25 174 849	302 098 186
Remuneration of councillors	970 011	970 011	970 011	970 011	970 011	970 011	970 011	970 011	970 011	970 011	970 011	970 011	11 640 129
Bulk purchases - electricity	837 116	837 116	837 116	837 116	837 116	837 116	837 116	837 116	837 116	837 116	837 116	837 116	10 045 389
Inventory consumed	333 333	333 333	333 333	333 333	333 333	333 333	333 333	333 333	333 333	333 333	333 333	333 333	4 000 000
Debt limitation	7 925 632	7 925 632	7 925 632	7 925 632	7 925 632	7 925 632	7 925 632	7 925 632	7 925 632	7 925 632	7 925 632	7 925 632	96 107 589
Depreciation and amortisation	612 825	612 825	612 825	612 825	612 825	612 825	612 825	612 825	612 825	612 825	612 825	612 825	7 355 894
Interest	15 364 726	15 364 726	15 364 726	15 364 726	15 364 726	15 364 726	15 364 726	15 364 726	15 364 726	15 364 726	15 364 726	15 364 726	184 376 714
Contracted services	187 596	187 596	187 596	187 596	187 596	187 596	187 596	187 596	187 596	187 596	187 596	187 596	2 251 155
Transfers and subsidies													
Irrecoverable debts written off													
Operational costs	16 250 477	16 250 477	16 250 477	16 250 477	16 250 477	16 250 477	16 250 477	16 250 477	16 250 477	16 250 477	16 250 477	16 250 477	195 005 728
Losses on disposal of Assets													
Other Losses													
Total Operating Expenditure	67 656 565	67 656 565	67 656 565	67 656 565	67 656 565	67 656 565	67 656 565	67 656 565	67 656 565	67 656 565	67 656 565	67 656 565	811 870 794
Capital Expenditure													
Transfers and subsidies - capital (monetary allocations) (Nation)	62 034 177	62 034 177	62 034 177	62 034 177	62 034 177	62 034 177	62 034 177	62 034 177	62 034 177	62 034 177	62 034 177	62 034 177	744 410 120
Internally generated funds	556 084	556 084	556 084	556 084	556 084	556 084	556 084	556 084	556 084	556 084	556 084	556 084	6 673 013
Borrowing	1	1	2	3	4	5	6	7	8	9	10	11	66
Total Capital Expenditure	62 590 261	62 590 261	62 590 261	62 590 261	62 590 261	62 590 261	62 590 261	62 590 261	62 590 261	62 590 261	62 590 261	62 590 261	751 083 199
TOTAL EXPENDITURE	130 246 826	130 246 826	130 246 826	130 246 826	130 246 826	130 246 826	130 246 826	130 246 826	130 246 826	130 246 826	130 246 826	130 246 826	1 562 953 993

Expenditure by source



4 ANNUAL PROJECTIONS OF REVENUE & EXPENDITURE PER VOTE

It is important to view expenditure in relation to revenue used to finance it. In this context, it is easy to see when expenditure exceeds Revenue, and the necessary remedial steps can then be taken to correct this situation. Failure to monitor expenditure in relation to Revenue will seriously hamper the municipality's ability to achieve its strategic goals for the year.

**Projections of Expenditure & Revenue by Vote
for Zululand District Municipality for the year
ended 30 June 2026**

Department	Projections for expenditure and revenue by vote	
	Operating Exp	CAPITAL EXP REVENUE
Council	101 126 811	-
Corporate Services	143 576 592	13 538 186
Finance	58 519 817	720 569 920
Community Development	90 991 113	173 914
Planning & Wsa	75 781 332	750 909 219
Technical Services	6 503 297	-
Water Purification and Distribution	324 313 590	67 732 176
Waste Water Management	11 066 232	17 063 853
Total	811 878 784	751 083 133
		1 783 830 957

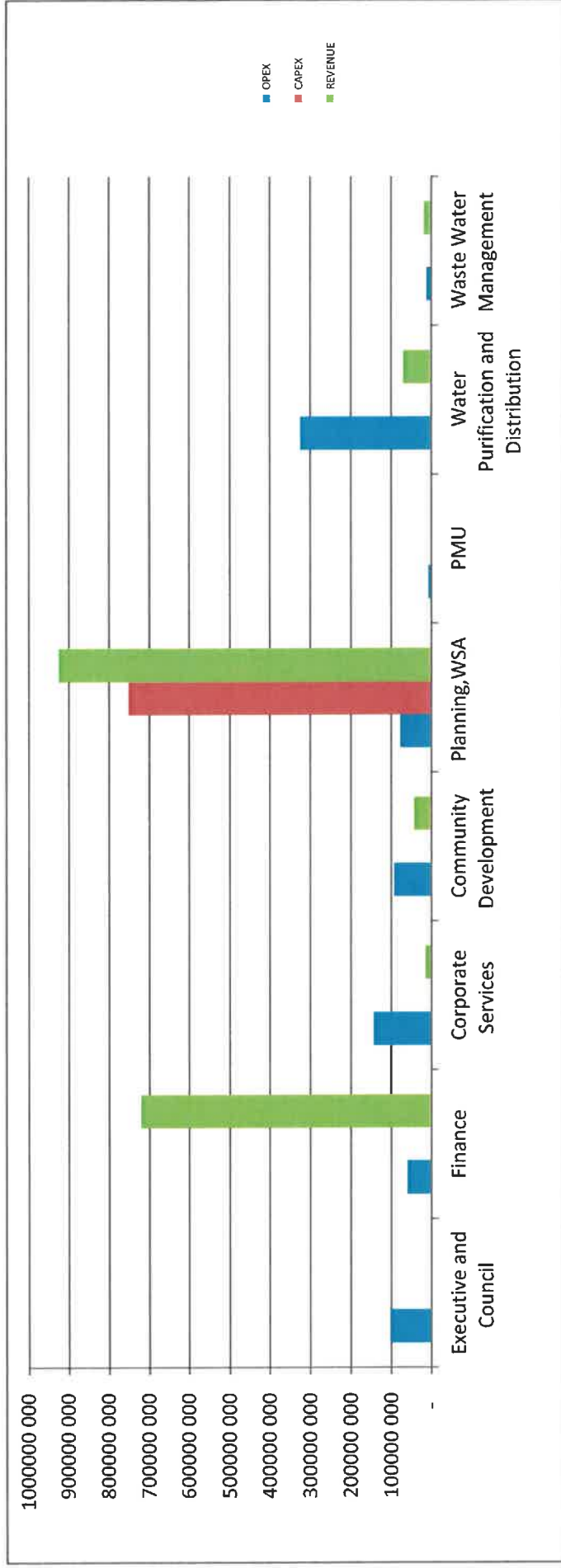


Chart- projection of Revenue and Expenditure by vote

5 QUARTERLY PROJECTIONS OF SERVICE DELIVERY TARGETS AND PERFORMANCE INDICATORS OF EACH VOTE

In terms of the SDBIP, Zululand District Municipality is required to provide non-financial measurable performance objectives in the form of service delivery targets and other performance indicators. Service delivery targets relate to the level and standards of service being provided to the community and include targets for the reductions in backlogs of basic services.

The goals and objectives set by Council as quantifiable outcomes that should be implemented by the administration over the next financial year are indicated on the sheet below.

TOP LAYER - SERVICE DELIVERY AND BUDGET IMPLEMENTATION PLAN (SDBIP) - ZULULAND DISTRICT MUNICIPALITY - 2025/2026

KPI NO.	PROGRAM DRIVER	OUTCOME	IDP Strategic Objective Ref. No.	STRATEGY	PROJECTS	LOCAL MUNICIPALITY	INDICATOR	ANNUAL TARGET	ACCUMULATIVE YF /NON-ACCUMULATIVE VES	UNIT OF MEASURE	Q1 - Target 30.9.2025	Q2 - Target 31.12.2025	Q3-Target 30.3.2026	Q4 -Target 30.6.2026	PORTFOLIO OF EVIDENCE
B2B PILLAR 2: BASIC SERVICE DELIVERY															
KPA 1: BASIC SERVICE DELIVERY= 11 indicators															
1	HOD (PLANNING)	Access to the full package of municipal services offered to the community is efficient, affordable, economical, acceptable quality, sustainable and supports economic growth	SO 1.2.1	Establishing and maintaining partnerships with government and private sector to accelerate provision of universal, equitable & consistent access to the municipal services that local communities are entitled to.	Water Infrastructures Supply	ALL	Number of households within ZDM to be provided with access to water within RDP standard per quarter	800 households within ZDM to be provided with access to water within RDP standard by 30 June 2026	Accumulative	Number	200 households within ZDM to be provided with access to water within RDP standard per quarter	200 households within ZDM to be provided with access to water within RDP standard per quarter	200 households within ZDM to be provided with access to water within RDP standard per quarter	200 households within ZDM to be provided with access to water within RDP standard per quarter	List of beneficiaries and GPS co-ordinates
2	HOD (PLANNING)				Water Infrastructures Supply	ALL	Number of households within ZDM to be provided with access to Sanitation within RDP standard per quarter	200 households within ZDM to be provided with access to Sanitation within RDP standard by 30 June 2026	Accumulative	Number	50 households within ZDM to be provided with access to Sanitation within RDP standard per quarter	50 households within ZDM to be provided with access to Sanitation within RDP standard per quarter	50 households within ZDM to be provided with access to Sanitation within RDP standard per quarter	50 households within ZDM to be provided with access to Sanitation within RDP standard per quarter	50 households within ZDM to be provided with access to Sanitation within RDP standard per quarter
3	HOD (PLANNING)	Access to the full package of municipal services offered to the community is efficient, affordable, economical, acceptable quality, sustainable and supports economic growth	SO 1.2.1	Establishing and maintaining partnerships with government and private sector to accelerate provision of universal, equitable & consistent access to the municipal services that local communities are entitled to.	Water Infrastructures Supply	ALL	Number of ZDM water contracts completed annually	12 ZDM contracts completed by 30 June 2026	Non - Accumulative	Number	N/A	N/A	N/A	12 ZDM contracts completed by 30 June 2026	Certificate of completion
4	HOD (PLANNING)				Water Infrastructures Supply	ALL	Number of ZDM water contracts under construction annually	23 ZDM water contracts under construction by 30 June 2026	Non - Accumulative	Number	N/A	N/A	N/A	N/A	23 ZDM water contracts under construction by 30 June 2026
5	HOD (TECH)	All categories of Municipal Infrastructure and resources are stable and maintained	SO 1.1.1	Continuously managing all existing infrastructure capital assets to minimize the total cost of owning and operating these assets	Bulk Water	ALL	Percentage of Kilolitres produced by ZDM water treatment plants per quarter	70% kilolitres produced by ZDM water treatment plants by 30 June 2026	Accumulative	Percentage	70% kilolitres produced by ZDM water treatment plants per quarter	70% kilolitres produced by ZDM water treatment plants per quarter	70% kilolitres produced by ZDM water treatment plants per quarter	70% kilolitres produced by ZDM water treatment plants per quarter	Monthly production report
6	HOD (TECH)				Water Quality Sampling	ALL	Percentage of ZDM Water determinants that pass laboratory tests per quarter	85% ZDM Water determinants that pass laboratory tests by 30 June 2026	Non - Accumulative	Percentage	85% ZDM Water determinants that pass laboratory tests per quarter	85% ZDM Water determinants that pass laboratory tests per quarter	85% ZDM Water determinants that pass laboratory tests per quarter	85% ZDM Water determinants that pass laboratory tests per quarter	85% ZDM Water determinants that pass laboratory tests per quarter
7	HOD (TECH)	All categories of Municipal Infrastructure and resources are stable and maintained	SO 1.1.1	Continuously managing all existing infrastructure capital assets to minimize the total cost of owning and operating these assets	Operations and Maintenance	ALL	The average time taken to fix spillages per quarter	24Hrs average time taken to fix spillages by 30 June 2026	Non - Accumulative	Hours	24Hrs average time taken to fix spillages per quarter	24Hrs average time taken to fix spillages per quarter	24Hrs average time taken to fix spillages per quarter	24Hrs average time taken to fix spillages per quarter	Job card summary report, Job Cards and SIZA system report
8	HOD (TECH)				Operations and Maintenance	ALL	The average time taken to suck septic tanks within ZDM per quarter	24Hrs taken to suck septic tanks within ZDM by 30 June 2026	Non - Accumulative	Hours	24Hrs taken to suck septic tanks within ZDM per quarter	24Hrs taken to suck septic tanks within ZDM per quarter	24Hrs taken to suck septic tanks within ZDM per quarter	24Hrs taken to suck septic tanks within ZDM per quarter	24Hrs taken to suck septic tanks within ZDM per quarter
9	HOD (FINANCE)	All categories of Municipal Infrastructure and resources are stable and maintained	SO 1.1.1	Continuously managing all existing infrastructure capital assets to minimize the total cost of owning and operating these assets	Operations and Maintenance	ALL	Date verification on ZDM infrastructure assets performed	Verification on ZDM infrastructure assets performed by 30 June 2026	Non - Accumulative	Date	N/A	N/A	N/A	Verification on ZDM Infrastructure assets performed by 30 June 2026	Engineers Certificate

KPI NO.	PROGRAM DRIVER	OUTCOME	IDP Strategic Objective Ref.	STRATEGY	PROJECTS	LOCAL MUNICIPALITY	INDICATOR	ANNUAL TARGET	ACCUMULATIVE / NON-ACCUMULATIVE	UNIT OF MEASURE	Q1 - Target	Q2 - Target	Q3 - Target	Q4 - Target	Assessment Report
10	HOD (PLANNING)	Access to the full package of municipal services offered to the community is efficient, affordable, economical, acceptable quality, sustainable and supports economic growth	SO 1.2.1	Establishing and maintaining partnerships with government and private sector to accelerate provision of universal, equitable & consistent access to the municipal services that local communities are entitled to.	Water Infrastructures Supply	ALL	Number of assessment report of ZDM water service provider (contractors) performed per quarter	4 assessment report of ZDM water service provider (contractors) performed by 30 June 2026	Non - Accumulative	Number	1 assessment report of ZDM water service provider (contractors) performed per quarter	1 assessment report of ZDM water service provider (contractors) performed per quarter	1 assessment report of ZDM water service provider (contractors) performed per quarter	1 assessment report of ZDM water service provider (contractors) performed per quarter	Assessment Report
11	HOD (PLANNING)														Assessment Report

828 PILLAR 5: BUILDING CAPABLE LOCAL GOVERNMENT INSTITUTIONS

KPA2: LOCAL ECONOMIC & SOCIAL DEVELOPMENT = 14 indicators															
KPI NO.	PROGRAM DRIVER	OUTCOME	IDP Strategic Objective Ref.	STRATEGY	PROJECTS	LOCAL MUNICIPALITY	INDICATOR	ANNUAL TARGET	ACCUMULATIVE / NON-ACCUMULATIVE	UNIT OF MEASURE	Q1 - Target	Q2 - Target	Q3 - Target	Q4 - Target	Assessment Report
12	HOD (COMMUNITY)	The overall economic and social conditions of the district are conducive for the creation of employment opportunities	SO 2.1.1	Support SMEs and create opportunities for growth	LEED	ALL	Number of SMEs / Co-operatives supported annually	10 SMEs / Co-operatives supported by 30 June 2026	Non - Accumulative	Number	N/A	N/A	N/A	10 of SMEs / Co-operatives supported by 30 June 2026	List of supported SMEs and signed distribution form
13	HOD (COMMUNITY)				Tourism	ALL	Number of tourism awareness campaigns held per quarter	20 tourism awareness campaigns held by 30 June 2026	Accumulative	Number	5 tourism awareness campaigns held per quarter	5 tourism awareness campaigns held per quarter	5 tourism awareness campaigns held per quarter	5 tourism awareness campaigns held per quarter	OOP and Attendance Register
14	HOD (COMMUNITY)				Indonsa	ALL	Number of students trained in music within ZDM annually	10 Students trained in music within ZDM by 30 June 2026	Non - Accumulative	Number	N/A	N/A	N/A	10 Students trained in music within ZDM by 30 June 2026	Graduation ceremony list
15	HOD (COMMUNITY)	Arts culture and heritage is preserved	SO 2.4.1	Promoting arts, culture and heritage	Indonsa	ALL	Number of students trained in drama within ZDM annually	20 Students trained in drama within ZDM by 30 June 2026	Non - Accumulative	Number	N/A	N/A	N/A	20 Students trained in drama within ZDM by 30 June 2026	Graduation ceremony list
16	HOD (COMMUNITY)				Indonsa	ALL	Number of students within ZDM trained in visual art annually	7 students within ZDM trained in visual art by 30 June 2026	Non - Accumulative	Number	N/A	N/A	N/A	7 students within ZDM trained in visual art by 30 June 2026	Graduation ceremony list
17	HOD (COMMUNITY)				Indonsa	ALL	Number of students within ZDM trained in fashion design annually	20 students within ZDM trained in fashion design by 30 June 2026	Non - Accumulative	Number	N/A	N/A	N/A	20 students within ZDM trained in fashion design by 30 June 2026	Graduation ceremony list
18	COO	Effects of poverty is minimized		normic	Special Programmes	ALL	Number of Special Programmes implemented annually	2 Special Programmes implemented by 30 June 2026	Non - Accumulative	Number	N/A	N/A	N/A	2 Special Programmes implemented by 30 June 2026	Programmes: Attendance registers and Pictures

19	HOD (FINANCE)	Promoting and maximising social and economic development	SO 2.2.1	Alleviate poverty and promote socio-economic development	Reduction of poverty	ALL	Number of implementation reports on Indigent Policy submitted to EXCO per quarter (Previous quarter)	4 Implementation reports on Indigent Policy submitted to EXCO by 30 June 2026	Accumulative	Number	1 Implementation report on Indigent Policy submitted to EXCO per quarter (Previous quarter)	1 Implementation report on Indigent Policy submitted to EXCO per quarter (Previous quarter)	1 Implementation report on Indigent Policy submitted to EXCO per quarter (Previous quarter)	1 Implementation report on Indigent Policy submitted to EXCO per quarter (Previous quarter)	Copy of Indigent Policy Implementation report and proof of submission
20	HOD (COMMUNITY)					ALL	Number of jobs created through the ZDM municipal EPWP initiatives including capital projects	1370 jobs created through the ZDM municipal EPWP initiatives including capital projects by 30 June 2026	Non - Accumulative	Number	N/A	N/A	1370 jobs created through the ZDM municipal EPWP initiatives including capital projects by 30 June 2026	Report relieved from the EPWP system	
21	HOD (COMMUNITY)	The health of Zuluand communities and citizens is improved		Regulating, monitoring and evaluating compliance of service providers to municipal health standards		ALL	Number of funeral parlours inspected within ZDM per quarter	140 funeral parlours inspected within ZDM by 30 June 2026	Accumulative	Number	35 funeral parlours inspected within ZDM per quarter	35 funeral parlours inspected within ZDM per quarter	35 funeral parlours inspected within ZDM per quarter	Summary of Inspection Register	
22	HOD (COMMUNITY)		SO 2.3.1		Health Awareness Campaigns	ALL	Number of food premises inspected within ZDM per quarter	192 food premises inspected within ZDM by 30 June 2026	Accumulative	Number	48 food premises inspected within ZDM per quarter	48 food premises inspected within ZDM per quarter	48 food premises inspected within ZDM per quarter	Summary of Inspection Register	
23	HOD (COMMUNITY)					ALL	Number of water samples within ZDM collected for independent laboratory testing per quarter	94 water samples within ZDM collected for independent laboratory testing by 30 June 2026	Accumulative	Number	24 water samples collected for independent laboratory testing per quarter	24 water samples collected for independent laboratory testing per quarter	24 water samples collected for independent laboratory testing per quarter	Copy of Lab results	
24	HOD (COMMUNITY)					ALL	Number of food samples within ZDM collected for independent laboratory testing per quarter	94 food samples within ZDM collected for independent laboratory testing by 30 June 2026	Accumulative	Number	24 food samples collected for independent laboratory testing per quarter	24 food samples collected for independent laboratory testing per quarter	24 food samples collected for independent laboratory testing per quarter	Copy of Lab results	
25	HOD (COMMUNITY)					ALL	Number of ZDM Municipal Health awareness campaigns held per quarter	20 ZDM Municipal Health awareness campaigns held by 30 June 2026	Accumulative	Number	5 ZDM Municipal Health awareness campaigns held per quarter	5 ZDM Municipal Health awareness campaigns held per quarter	5 ZDM Municipal Health awareness campaigns held per quarter	OOB and Attendance Register	
KPI NO.	PROGRAM DRIVER	OUTCOME	IDP Strategic Objective Ref. No.	STRATEGY	PROJECTS	LOCAL MUNICIPALITY	INDICATOR	ANNUAL TARGET	ACCUMULATIVE /NON-ACCUMULATIVE	UNIT OF MEASURE	Q1 -Target	Q2 -Target	Q3-Target	Q4 -Target	PORTFOLIO OF EVIDENCE

B2B PILLAR 4: SOUND FINANCIAL MANAGEMENT

KPA 3: MUNICIPAL FINANCIAL VIABILITY AND MANAGEMENT = 09 indicators

26	HOD (FINANCE)	Apply sound financial management practices to keep a positive cash balance, coverage and liquidity ratios	SO 3.1.1	Establishing and maintaining a sound and sustainable management of the fiscal and financial affairs of the municipality and its entities.	Debt Collection	Percentage of Collection Rate achieved per quarter	60% Collection Rate achieved by 30 June 2026	Non - Accumulative	Percentage	60% Collection Rate achieved per quarter	60% Collection Rate achieved per quarter	60% Collection Rate achieved per quarter	60% Collection Rate achieved per quarter	Copy of Collection Report
27	HOD(CORP)				Training & Development	Percentage of budget spent on implementing WSP	100% of budget spent on implementing WSP by 30 June 2026	Non - Accumulative	N/A	N/A	N/A	N/A	N/A	N/A
28	HOD (FINANCE)	Financial: Administration	SO 3.1.2	Apply sound financial management practices to keep a positive cash balance, coverage and liquidity ratios	Financial: Administration	ALL	Date Report on Sec 13 of the MFMA submitted to AG	Non - Accumulative	Date	Report on Sec 13 of the MFMA submitted to AG by 31 July 2025	N/A	N/A	N/A	Proof of submission and copy of Sec 13 report

KPI NO.	PROGRAM DRIVER	OUTCOME	IP Strategic Objective Ref.	STRATEGY	PROJECTS	LOCAL MUNICIPALITY	INDICATOR	ANNUAL TARGET	ACCUMULATIVE /NON-ACCUMULATIVE	UNIT OF MEASURE	Q1 -Target 30.9.2025	Q2 - Target 31.12.2025	Q3-Target 30.3.2026	Q4 - Target 30.6.2026	Portfolio of Evidence	
29	HOD (FINANCE)	The Municipality is financially viable with sound financial management	SO 3.1.3	Manage, monitor and review existing financial systems to support accurate and credible reporting, budget monitoring and compliance	On going process	ALL	Number of Sec 52 reports submitted to Council and Provincial Treasury per quarter (Previous quarter)	4 Sec 52 reports submitted to Council and Provincial Treasury by 30 June 2026	Non - Accumulative	Number	1 Sec 52 report submitted to Council and Provincial Treasury per quarter (Previous quarter)	1 Sec 52 report submitted to Council and Provincial Treasury per quarter (Previous quarter)	1 Sec 52 report submitted to Council and Provincial Treasury per quarter (Previous quarter)	1 Sec 52 report submitted to Council and Provincial Treasury per quarter (Previous quarter)	Council Resolution and copy of Sec 52 report	
30	HOD (PLANNING)				On going process	ALL	Date 2024/2025 IDP process plan including Budget time table submitted to Council	2024/2025 IDP Process Plan including Budget time table submitted to Council by 31 August 2025	Non - Accumulative	Date	2024/2025 IDP Process Plan including Budget time table submitted to Council by 31 August 2025	N/A	N/A	N/A	N/A	Council resolution and copy of IDP process plan including budget timetable
31	HOD (FINANCE)				On going process	ALL	Date of Submission of Sec 72 Mid - Year Budget & Performance Assessment to the Mayor & Provincial Treasury	Submission of Sec 72 Mid Year Budget & Performance Assessment to the Mayor & Provincial Treasury by 25 January	Non - Accumulative	Date	Submission of Sec 72 Mid Year Budget & Performance Assessment to the Mayor & Provincial Treasury by 25 January	N/A	N/A	Submission of Sec 72 Mid Year Budget & Performance Assessment to the Mayor & Provincial Treasury by 25 January	Mid - Year Budget & Performance Assessment	Proof of submission and copy of Sec72
32	HOD (FINANCE)				On going process	ALL	Date adjustment budget submitted to council	Date adjustment budget submitted to council by 28 Feb 2026	Non - Accumulative	Date	Adjustment Budget submitted to council by 28 Feb 2026	N/A	N/A	Adjustment Budget submitted to council by 28 Feb 2026	Council Resolution and copy of adjustment Budget	Council Resolution and copy of adjustment Budget
33	HOD (FINANCE)				On going process	ALL	Date Final Budget approved by Council	Final Budget approved by Council by 31 May 2026	Non - Accumulative	Date	Final Budget approved by Council by 31 May 2026	N/A	N/A	Final Budget approved by Council by 31 May 2026	Council Resolution and copy of the final budget	Council Resolution and copy of the final budget
34	HOD (FINANCE)	Revision of the SCM policy	SO 3.1.4	Refine procurement systems and processes to respond to the demand for services	PROJECTS	LOCAL MUNICIPALITY	Number of SCM quarterly reports submitted to EXCO per quarter (Previous quarter)	4 SCM quarterly reports submitted to EXCO by 30 June 2026	Accumulative	Number	1 SCM quarterly report submitted to EXCO per quarter (Previous quarter)	1 SCM quarterly report submitted to EXCO per quarter (Previous quarter)	1 SCM quarterly report submitted to EXCO per quarter (Previous quarter)	1 SCM quarterly report submitted to EXCO per quarter (Previous quarter)	Proof of submission and Copy of SCM Quarterly reports	

828 PILLAR 3: GOOD GOVERNANCE

KPA 4: GOOD GOVERNANCE AND PUBLIC PARTICIPATION = 06 indicators

KPI NO.	PROGRAM DRIVER	OUTCOME	IP Strategic Objective Ref.	STRATEGY	PROJECTS	LOCAL MUNICIPALITY	INDICATOR	ANNUAL TARGET	ACCUMULATIVE /NON-ACCUMULATIVE	UNIT OF MEASURE	Q1 -Target 30.9.2025	Q2 - Target 31.12.2025	Q3-Target 30.3.2026	Q4 - Target 30.6.2026	Portfolio of Evidence	
35	COO	Systematic development and monitoring of all municipal policies, bylaws, strategies, plans and frameworks in line with any applicable legislation	SO4.1.2	Promoting transparent and accountable governance through regular community engagements and effective administration	LEGAL	ALL	Number of reports on legal functions submitted to MM per quarter	4 report on legal functions submitted to MM by 30 June 2026	Accumulative	Number	1 report on legal functions submitted to MM per quarter	1 report on legal functions submitted to MM per quarter	1 report on legal functions submitted to MM per quarter	1 report on legal functions submitted to MM per quarter	Proof of submission and report	
36	COO				Communications	ALL	Number of ZDM newsletter published per quarter	4 ZDM newsletter published by 30 June 2026	Accumulative	Number	1 ZDM newsletter published per quarter	1 ZDM newsletter published per quarter	1 ZDM newsletter published per quarter	1 ZDM newsletter published per quarter	1 ZDM newsletter published per quarter	Newsletters
37	COO				Budget and IDP Roadshow	ALL	Number of Community engagements held Bia annual	8 Community engagements held Bia annual	Accumulative	Number	4 Community engagement held Bia annual	N/A	N/A	N/A	4 Community engagements held Bia annual	Notice, OOP, And copy of report
38	HOD (COMMUNITY)				LED	ALL	Number of implementation reports on the ZDM LED strategy submitted to Community Services Portfolio Committee per quarter	4 implementation reports on the ZDM LED strategy submitted to Community Services Portfolio Committee by 30 June 2026	Accumulative	Number	1 implementation report on the ZDM LED strategy submitted to Community Services Portfolio Committee by 30 June 2026	Accumulative	Number	1 implementation report on the ZDM LED strategy submitted to Community Services Portfolio Committee per quarter	1 implementation report on the ZDM LED strategy submitted to Community Services Portfolio Committee per quarter	1 implementation report on the ZDM LED strategy submitted to Community Services Portfolio Committee per quarter

KPI NO.	PROGRAM DRIVER	OUTCOME	IDP Strategic Objective Ref No.	STRATEGY	PROJECTS	LOCAL MUNICIPALITY	INDICATOR	ANNUAL TARGET	ACCUMULATIVE VE /NON-ACCUMULATIVE	UNIT OF MEASURE	Q1 - Target 30.9.2025	Q2 - Target 31.12.2025	Q3-Target 30.3.2026	Q4 - Target 30.6.2026	PORTFOLIO OF EVIDENCE
---------	----------------	---------	---------------------------------	----------	----------	--------------------	-----------	---------------	-----------------------------------	-----------------	--------------------------	---------------------------	------------------------	--------------------------	-----------------------

Spatial Planning & Environmental Management															
KPA 6: CROSS CUTTING INTERVENTIONS = 01 indicators															
48	HOD (COMM)	Disasters are prevented and death with effectively where they occur	SO 6.1.2	To minimize the vulnerability of communities by building a culture of risk reduction (Disaster prevention in preparedness)	Disaster Management	ALL	Number of lightning conductors installed in identified rural households within ZDM annually	60 of lightning conductors installed in identified rural households by 30 June 2026	N/A	Number	N/A	N/A	N/A	60 of lightning conductors installed in identified rural households within ZDM by 30 June 2026	Certificate of compliance and beneficiary list with GPS coordinates

Program Driver	Outcome	IDP Strategic Objective Ref No.	Strategy	Projects	Local Municipality	Indicator	Annual Target	Accumulative	Unit of Measure	Q1 - Target	Q2 - Target	Q3-Target	Q4 - Target	Portfolio of Evidence	
HOD (COMM)	Disasters are prevented and death with effectively where they occur	SO 6.1.2	To minimize the vulnerability of communities by building a culture of risk reduction (Disaster prevention in preparedness)	Disaster Management	ALL	Number of lightning conductors installed in identified rural households within ZDM annually	60 of lightning conductors installed in identified rural households by 30 June 2026	N/A	Number	N/A	N/A	N/A	N/A	60 of lightning conductors installed in identified rural households within ZDM by 30 June 2026	Certificate of compliance and beneficiary list with GPS coordinates

Total Key Performance Indicators - our 87A	
87A-1-650=11 indicators	
87A-2-ED= 14 indicators	
87A-3-IMP=09 indicators	
87A-4-EG= 06 indicators	
87A-5-100= 07 indicators	
87A-6-C= 01 indicators	
87A-7-PI	
Total Indicators	48 KPI

MR SP MOSIA

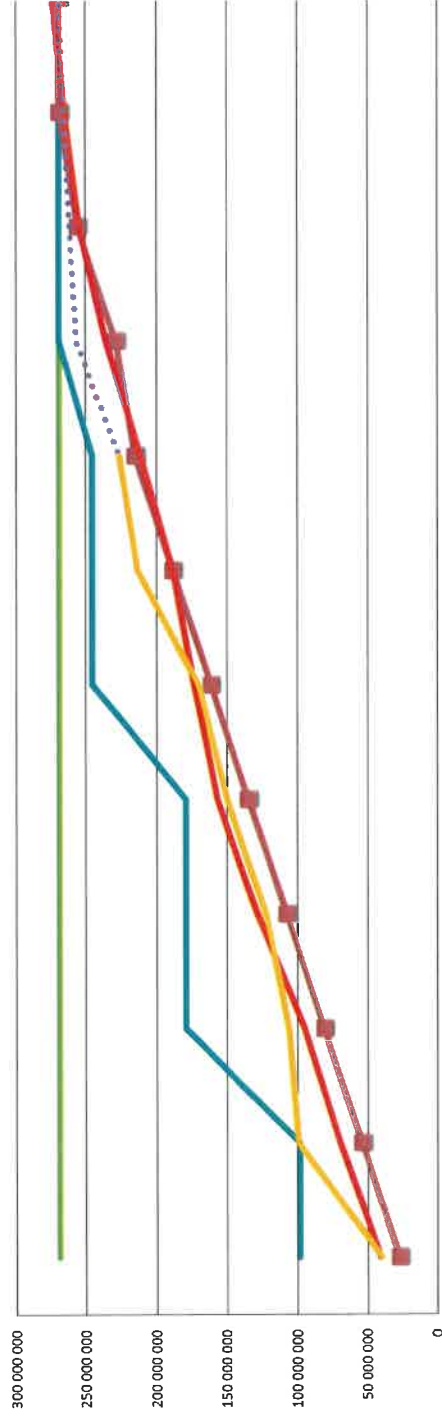
MUNICIPAL MANAGER

DATE

Feb-26

6. DETAILED CAPITAL WORKS PLAN AND WARD INFORMATION

Zululand District Municipality MIG Cash flow Schedule for 2025/26



	Jul	Aug	Sep	Oct	Nov	Dec	Jan	Feb	Mar	Apr	May	Jun
MIG Allocation	268969 000	268969 000	268969 000	268969 000	268969 000	268969 000	268969 000	268969 000	268969 000	268969 000	268969 000	268969 000
Transfer Payments / Drawdown	98000 000	98000 000	179000 000	179000 000	179000 000	245000 000	245000 000	245000 000	268969 000	268969 000	268969 000	268969 000
Provincial Target line	26896 900	53793 800	80690 700	107587 600	134484 500	161381 400	188278 300	215175 200	228623 650	255520 550	268969 000	268969 000
Original Projected expenditure	40461 612	69205 256	94827 822	128356 047	156886 035	173478 474	188391 730	211079 558	235519 046	254165 457	265019 569	27281 000
Projected expenditure	39450 300	98922 630	105655 444	122166 668	149362 557	170422 876	213119 870	226313 602	256104 131	261306 147	266000 025	26896 900
Certified expenditure	39450 300	98922 630	105655 444	122166 668	149362 557	170422 876	213119 870	226313 602	256104 131	261306 147	266000 025	26896 900



KWAZULU-NATAL PROVINCE
COOPERATIVE GOVERNANCE AND
TRADITIONAL AFFAIRS
REPUBLIC OF SOUTH AFRICA

MIG

Municipal
Infrastructure
Grant

Previously known as the Yellow Form
March
2025/26
13 March 2026

Claim Month
 Financial Year
 Date

Version 2023.07
 DopeBox
 (Y:\MIGDO)

MUNICIPAL INFRASTRUCTURE GRANT [MIG] - *PROJECT CLAIMS SCHEDULE (Submission of Monthly MIG Expenditure)

MUNICIPALITY NAME: Zululand District Municipality

No.	Project No (REGISTERED MIGMS projects only)	Project Name	MIG FUNDS REGISTERED (NOR)	MIS FORM ID No. Captured with respect to payment (replace certificate no.)	CLAIMED AMOUNT INVOICE	RETENTION AMOUNT ONLY for DIRECT CLAIMS (if any)	MIG EXPENDITURE AMOUNT Includes 4 RETENTION (if any)	CURRENT Y/ or ROLLOVER/ACC RURAL Grant (DIRECT/Claim)	Consistent (INDIRECT) or Compressor (DIRECT/Claim)	CONTRACTOR/ CONSULTANT COMPANY NAME	CONTRACT / TENDER VALUE less contingencies (Vat Inclusive)	INVOICE NUMBER from Service Provider	COMMENTS: (if any)	Covering letter from Municipality	With VAT Number	Payment Certificate	Proof of payment	SUPPORTING DOCS ON WORKS	
																		X	X
e.g.	2017MIGFDC2631824	Upgrading of EFC Green Road ward 31	4 574 327.09	MIG 8 123456	448 034.35	44 963.00	498 997.35	CURRENT	DIRECT	ABC Engineering	4 000 000.00	INV006	RETENTION RETAINED BY MUNICIPALITY	X	X	X	X	X	X
1	2019MIGFDC2631822	Sintlangeniha West RWSS Phase 3	500 857 120.01	MIG 8 58647	4 223 200.76	0.00	4 223 200.76	CURRENT	DIRECT	Melo Okuhle Trading Enterprise CC	184 072 754.05	29122_(ZDM06 292933)	Construction Fees SWR - 586715 / NO VARIANCE - MAX RETENTION WITHHELD	X	X	X	X	X	X
2	2019MIGFDC2631822	Sintlangeniha West RWSS Phase 3	500 857 120.01	MIG 8 586745	1 613 121.53	0.00	1 613 121.53	CURRENT	DIRECT	Melo Okuhle Trading Enterprise CC	184 072 754.05	29121_(ZDM06 292933)	Construction Fees SWR - 586717 / NO VARIANCE - MAX RETENTION WITHHELD	X	X	X	X	X	X
3	2019MIGFDC2631822	Sintlangeniha West RWSS Phase 3	500 857 120.01	MIG 8 586746	2 017 977.25	0.00	2 017 977.25	CURRENT	DIRECT	RURAL PUMPS CC - Sim West	132 457 531.81	8801_(ZDM012/ 8801-3834)	Construction Fees SWR - 586718 / NO VARIANCE - MAX RETENTION WITHHELD	X	X	X	X	X	X
4	2019MIGFDC2631822	Sintlangeniha West RWSS Phase 3	500 857 120.01	MIG 8 586748	3 193 648.33	0.00	3 193 648.33	CURRENT	DIRECT	RURAL PUMPS CC - Sim West	132 457 531.81	8800_(ZDM012/ 8800-3834)	Construction Fees SWR - 586719 / NO VARIANCE - MAX RETENTION WITHHELD	X	X	X	X	X	X
5	2019MIGFDC2631822	Sintlangeniha West RWSS Phase 3	500 857 120.01	MIG 8 586751	1 884 935.57	0.00	1 884 935.57	CURRENT	DIRECT	MOLEWALE THU TRADING & PROJECTS	40 051 705.75	18_20240118_(Z DM0082023-24)	Construction Fees SWR - 586721 / NO VARIANCE - MAX RETENTION WITHHELD	X	X	X	X	X	X
6	2019MIGFDC2631822	Sintlangeniha West RWSS Phase 3	500 857 120.01	MIG 8 586753	955 988.08	0.00	955 988.08	CURRENT	DIRECT	MOLEWALE THU TRADING & PROJECTS	40 051 705.75	19_20240118_(Z DM0082023-24)	Construction Fees SWR - 586722 / NO VARIANCE - MAX RETENTION WITHHELD	X	X	X	X	X	X
7	2021MIGFDC26419908	Upgrading of Ulundi Water Treatment Works - Phase 2	159 279 945.00	MIG 8 586755	801 258.82	0.00	801 258.82	CURRENT	DIRECT	SIZABONKE CIVILS Va PILCON PROJECTS	95 986 701.50	28_10101806_(Z DM192023)	Construction Fees SWR - 586723 / NO VARIANCE - MAX RETENTION WITHHELD	X	X	X	X	X	X
8	2019MIGFDC2631822	Mandlazi Regional Water Supply - Phase 5	447 768 410.25	MIG 8 586757	654 822.14	0.00	654 822.14	CURRENT	INDIRECT	KUKHANYA PROJECTS (PTY) LTD	3 418 685.34	54_300_(ZDM02 2023-2024)	PROFESSIONAL FEES - Provision of Civil Engineering Services for Mandlazi Rectification Phase 5 (Mandlazi Zone 11 & 12)	X	X	X	X	X	X
9	2019MIGFDC2631822	Mandlazi Regional Water Supply - Phase 5	447 768 410.25	MIG 8 586760	2 188 638.42	0.00	2 188 638.42	CURRENT	DIRECT	Mvebe Construction	17 846 889.76	MWBOY2812001 2812001-2812001	Construction Fees SWR - 586726 / NO VARIANCE - MAX RETENTION WITHHELD	X	X	X	X	X	X
10	2019MIGFDC2631822	Mandlazi Regional Water Supply - Phase 5	447 768 410.25	MIG 8 586762	3 127 681.79	347 608.88	3 475 068.65	CURRENT	DIRECT	NAP Holdings (PTY) LTD-Inditola	45 675 202.72	19_(ZDM018120 2023-24)	Construction Fees SWR - 586727 / VARIANCE - 6347206.86 VAT Inc. RETENTION	X	X	X	X	X	X
11	2019MIGFDC2631822	Mandlazi Regional Water Supply - Phase 5	447 768 410.25	MIG 8 586763	4 628 810.49	503 201.18	5 032 011.65	CURRENT	DIRECT	Mhlongeni General Trading	65 547 119.85	2023_(ZDM020 2023-24)	Construction Fees SWR - 586728 / VARIANCE - 15002016.64 VAT Inc. RETENTION	X	X	X	X	X	X
12	2024MIGFDC26510617	ZULULAND RURAL SANITATION - PHASE 3A	79 981 012.00	MIG 8 586765	2 187 980.00	243 110.00	2 431 100.00	CURRENT	DIRECT	THANDAWANDA TRADING CC	29 846 378.56	01_(ZDM006072 2023-24)	Construction Fees SWR - 586730 / VARIANCE - 8248 110.00 VAT Inc. RETENTION	X	X	X	X	X	X
13	DC26 PMU	PMU 2025/26	125 962 654.64	MIG 8	1 371 260.00	0.00	1 371 260.00	CURRENT	DIRECT	Africa Consulting Engineers	13 448 450.00	01_(ZDM00712 2023-24)	Professional Fees - PMU Support	X	X	X	X	X	X
14					0.00		0.00												
15					0.00		0.00												
16					0.00		0.00												
17					0.00		0.00												
18					0.00		0.00												
19					0.00		0.00												
20					0.00		0.00												
21					0.00		0.00												
22					0.00		0.00												
23					0.00		0.00												
24					0.00		0.00												
25					0.00		0.00												
26					0.00		0.00												

APPROVAL OF THE ZULULAND DISTRICT MUNICIPALITY'S ADJUSTED SERVICE DELIVERY AND BUDGET IMPLEMENTATION PLAN (SDBIP) FOR THE YEAR ENDING 30 JUNE 2026

The Zululand District Municipality's Adjusted SDBIP for the year ending 30 June 2026 has been reviewed and approved by the Honourable Mayor: Cllr. MB Khumalo as said in S69 (3) (a) and S54 (3) of the Municipal Finance Management Act.

Date received: 2026/02/20

Date Approved: 2026/02/23

Signature: 