

1. ADMINISTRATION

Zululand District Municipality is located in northern KwaZulu-Natal (KZN) covers an area of 14,808 km² and is divided into five Local Municipalities (LMs; Figure 1.1).

Zululand District Municipality (ZDM) is under a legal obligation in terms of Section 12 of the Water Services Act, 1997¹ to produce a long term plan for water services within its jurisdiction. This document aims to fulfil this legal obligation through the identification of community needs within the Zululand district, with the presentation of an overall long-term strategic plan with a five-year implementation plan for water services.

This Water Services Development Plan (WSDP) has been drafted for the ZDM by ZAI (Ulundi). The relevant planning departments were consulted to establish an integrated water services plan that links with both the District Municipality's goals and objectives and the current Integrated Development Plan (IDP). This document is presented as the WSDP for Zululand District Municipality. It must be stressed that the collection of detailed information on water services in the area is an on-going programme. This document therefore depicts the water services situation in the ZDM at the time of writing. The administrative details, including contact persons who participated in this process, are given in the subsections that follow.

1.1 Name and address of WSA

Name	Zululand District Municipality	
Address	Private Bag X76 ULUNDI 3838	Lot B400, Gagane Street ULUNDI 3838
DWAF Reference No	KN342	

1.2 Contact person/persons

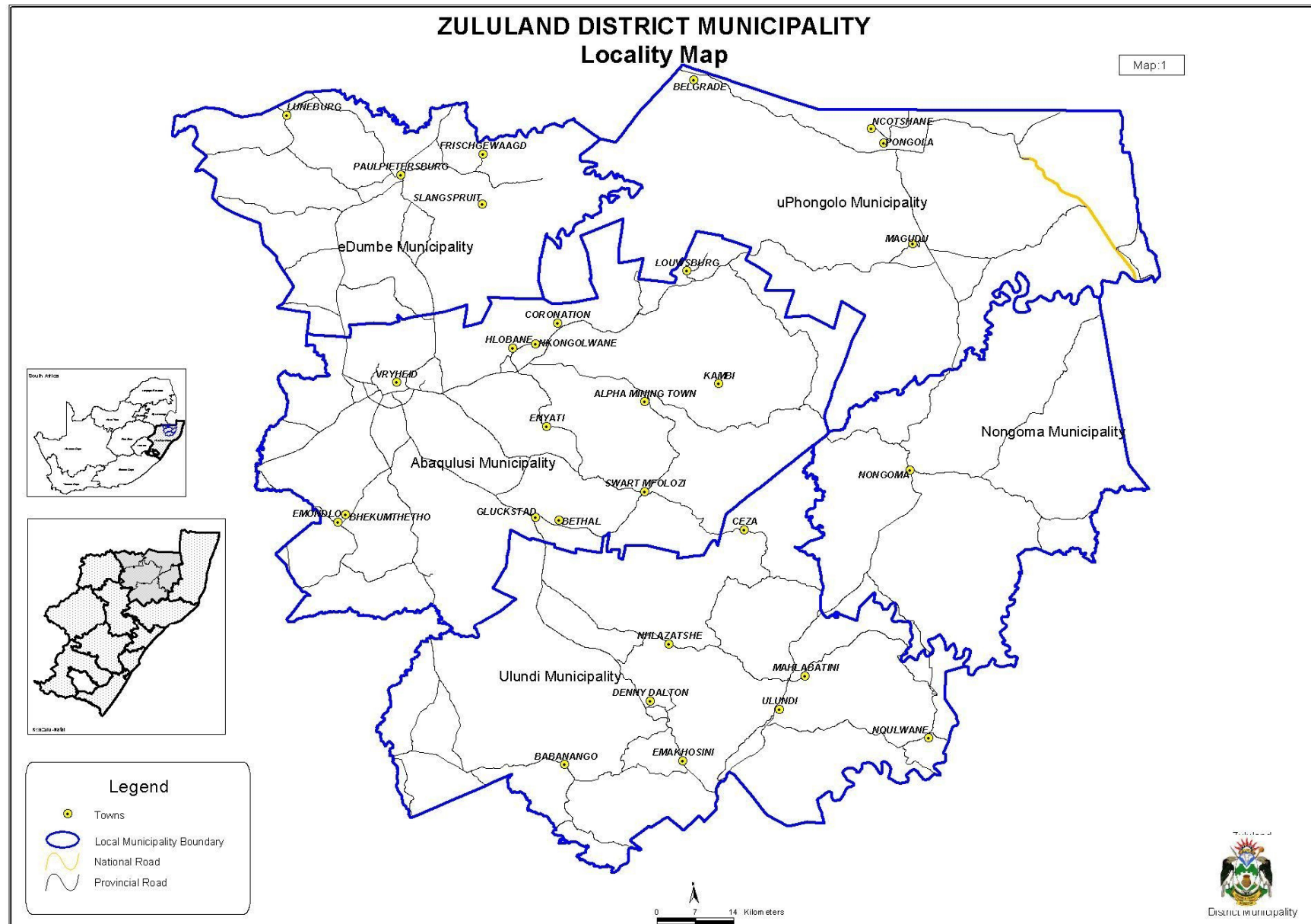
Contact persons within the DM who are responsible for the functioning, planning and implementation of the WSDP and associated projects are listed in Table 1.2.

Table 1.2: Contact persons.

Name	Position	Tel Number	Email
Mr Johan De Klerk	Municipal Manager	035 874 5500	mm@zululand.org.za
Mr Johan Jordaan	Deputy Director: Water Services Authority	035 874 5537	jjordaan@zululand.org.za
Mr Solomon Khumalo	HOD: Technical Services	035 874 5500	skhumalo@zululand.org.za
Mr Christo Nel	HOD: Planning and Community Development	035 874 5500	cnel@zululand.org.za

¹ Act No. 108 of 1997

Figure 1.1: Locality map of Zululand District Municipality.



1.3 WSDP compilation team

As has been stated above, ZAI compiled the WSDP document on behalf of the ZDM. This was achieved under the direction of the then Director Technical Services, Mr Christo Nel and the Deputy Director: Water Services Authority (WSA), Mr Johan Jordaan. Planning over the district was through a number of consultants, with the overall team involved given in Table 1.3.

Table 1.3: WSDP compilation team.

Name	Organisation	Tel Number	Email
Mr Christo Nel	ZDM Director Technical Services	035 874 5500	cnel@zululand.org.za
Mr Johan Jordaan	ZDM Water Services Authority Manager	035 874 5537	jjordaan@zululand.org.za
Mr Lawrence Fraser	ZAI Consultants – lead & regional consultants	035 870 0311	lrf@zai.co.za
Ms Linda McKenzie	Intermap – GIS consultants		linda@intermap.co.za
Mr Theo van Niekerk	Geomeasure Group – water resource consultants	082 552 5077	
	Edwin Lille – water resource consultants		
	WSP Walmsley Environmental Consultants		
	Human Scale Development Consortium (HSDC) – social consultants		
	Bigen Africa – legislation overview		
Mr Ernst Cloete	Ernst Cloete and Associates (ECA) – regional scheme consultant	034 983 2825	
Mr David Wing	UWP Engineers – regional scheme consultant	035 870 1834	
Mr George van Rooyen	DLV – regional scheme consultant	082 922 3495	dlvvh@dlv.co.za
Mr George Snyman	V3 Consulting Engineers – regional scheme consultant		
Mr Banie Lundie	Afri Infra – regional scheme consultant	082 775 6046	
Dr Digby Gold	Terratest – rudimentary water supply consultant	033 347 3967	goldd@terratest.co.za

DRAFT

1.4 IDP drafting team

The IDP for the ZDM has been compiled in conjunction with the WSDP and the Eskom regional plan. Regular meetings and updates are held between the Deputy Director: Development Planning (responsible for the IDP) and the Deputy Director: Water Services Authority. The Deputy Director: Development Planning is also part of the WSDP planning team.

The original IDP was developed and drafted in-house during the 2002/2003 financial-year and adopted by Council on 26 June 2003, with the first review in March 2004. The ZDM is currently conducting the second review for implementation in the 2005/2006 financial-year. This second review has been outsourced to Sivest, whose brief is to:

- Develop a process plan.
- Include the various sector plans.
- Develop standards and plans for telecommunications and electrification.
- Develop datasets for the new ZDM area and check the population.

The review period runs from about February/March to September of the preceding financial year i.e. the 2006/2007 review will be conducted during the period February to September 2005. All the personnel included in the IDP drafting team with their contact details are given in Table 1.4.

Table 1.4: IDP drafting team.

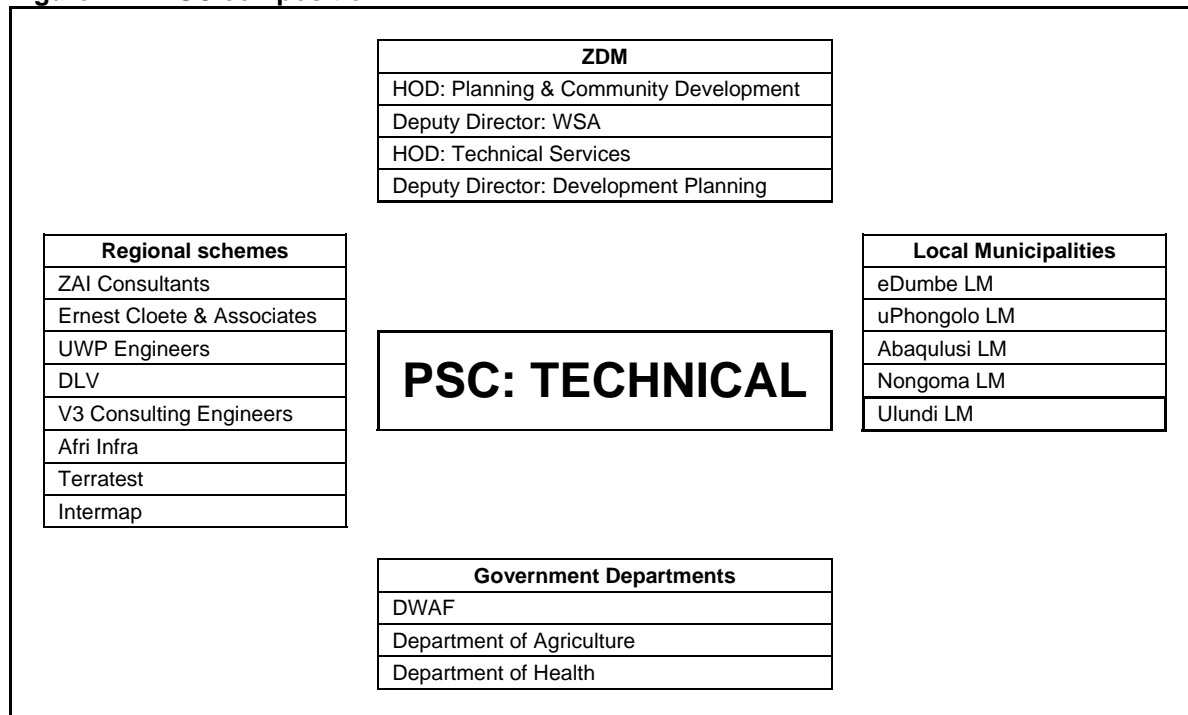
Name	Organisation	Tel number	Email
Mr Stefan Landman	Deputy Director: Development Planning	035 874 5536	slandman@zululand.org.za
Mr Bongani Sibiya	Development Planning Department	035 874 5500	
Mr Christo Nel	HOD: Planning & Community Development	035 874 5500	cnel@zululand.org.za
Mr Solomon Khumalo	HOD: Technical Services	035 874 5500	skhumalo@zululand.org.za
Mr Johan Jordaan	Deputy Director: Water Services Authority	035 874 5537	jjordaan@zululand.org.za
Additional personnel for the 2005/6 Review			
Brenda Strachan	Sivest P.O. Box 1874, Richards Bay, 3900 4 Montego Park, Richards Bay	083 287 8246	

DRAFT

1.5 Participation process

Planning and progress of the WSDP is reported on at monthly WSDP Project Steering Committee (PSC) meetings held at the ZDM offices in Ulundi. The technical PSC consists of the ZDM Director: Technical Services and Deputy Directors: Water Services Authority and Development Planning, regional scheme consultants, representatives from the five LMs, Mhlathuze Water, Department of Health, Department of Agriculture and Department of Water Affairs and Forestry (DWAF; Figure 1.2). Presentations from other interested and affected parties that may impact on the planning and development process of water services are made at these meetings on a regular basis.

Figure 1.2: PSC composition.



The political and stakeholder involvement is included at the approval stage, however some councillors may be involved in the technical meetings. Most affected parties were made aware of the WSDP during its development, however those that were not, were given the opportunity of viewing and commenting on the draft document prior to final approval by the ZDM Council. The public were informed of this participation forum through local newspapers. The list of stakeholder involvement is given in Table 1.5.

DRAFT

Table 1.5: Stakeholders Involvement.

Stakeholders	Level of Involvement (Yes / No)		
	Informed of WSDP process	Participated in planning workshops	Draft made available
Domestic consumers	Y	N	Y
Potential domestic consumers (not served at present)	Y	N	Y
Industrial consumers	Y	N	Y
Commercial consumers	Y	N	Y
Water Boards and /or water service providers	Y	Y	Y
Water services institutions	Y	Y	Y
Catchment Management Agency	Y	N	Y
The local IDP drafting team or Local Municipality	Y	Y	Y
Regional IDP drafting team or District Municipality	Y	Y	Y
Neighbouring WSA's	Y	N	Y
Provincial departments (e.g. DLG&H)	Y	Y	Y
Regional Office of DWAF	Y	Y	Y
Council	Y	Y	Y
Office of the Premier for the relevant Province			Y
Minister for Provincial and Local Government			Y
The Minister of Water Affairs and Forestry			Y
Other (state as appropriate)			

DRAFT

1.6 Responsible officials

The WSDP has been drafted and will be driven by the Deputy Director: Water Services Authority in association with the HOD: Planning & Community Development and the HOD: Technical Services and their staff. The officials specifically assigned to the different components of the WSDP are listed in Table 1.6, with a current organogram of the ZDM attached as Appendix 2.

Table1.6: Responsible officials.

Areas of expertise	Responsible official	Tel number	E-mail
Project manager	Deputy Dir: WSA	035 874 5537	jjordaan@zululand.org.za
Workshop/participation facilitator/co-coordinator	Deputy Dir: WSA	035 874 5537	jjordaan@zululand.org.za
Physical profile / GIS / maps	Deputy Dir: Development Planning	035 874 5536	slandman@zululand.org.za
Social profile / community liaison	HOD: Planning & Community Development	035 874 5500	cnel@zululand.org.za
Economic profile / business liaison	Deputy Dir: Development Planning	035 874 5536	slandman@zululand.org.za
Domestic consumer profile	Chief Financial Officer	035 874 5500	
Industry consumers & water quality	Deputy Dir: WSA	035 874 5537	jjordaan@zululand.org.za
Health education & liaison	HOD: Planning & Community Development	035 874 5500	cnel@zululand.org.za
Water resources, conservation & demand management	Deputy Dir: WSA	035 874 5537	jjordaan@zululand.org.za
Water services infrastructure operation	HOD: Technical Services	035 874 5500	skhumalo@zululand.org.za
Water services system management	Deputy Dir: WSA	035 874 5537	jjordaan@zululand.org.za
Environmental impact & legal compliance	Deputy Dir: Development Planning	035 874 5536	slandman@zululand.org.za
Institutional and management	HOD: Planning & Community Development	035 874 5500	cnel@zululand.org.za
Finance	Chief Financial Officer	035 874 5500	
Strategic planning & analysis co-ordination	Deputy Dir: WSA	035 874 5537	jjordaan@zululand.org.za
Inter-sectoral alignment and integration with IDP	Deputy Dir: Development Planning	035 874 5536	slandman@zululand.org.za

1.7 Approval by Council

The WSDP has been through a public participation process and the comments have been incorporated. The WSDP has been submitted to the ZDM Council for approval as identified in Table 1.7, and a copy of the resolution is attached in Appendix 1.

Table 1.7: List of Council resolutions.

Council Resolution		
Resolution Reference No		Date
Resolution No ZDMC: 1273	Executive Committee	23 October 2003
Resolution No ZDMC: 679	Full Council	20 November 2003

DRAFT