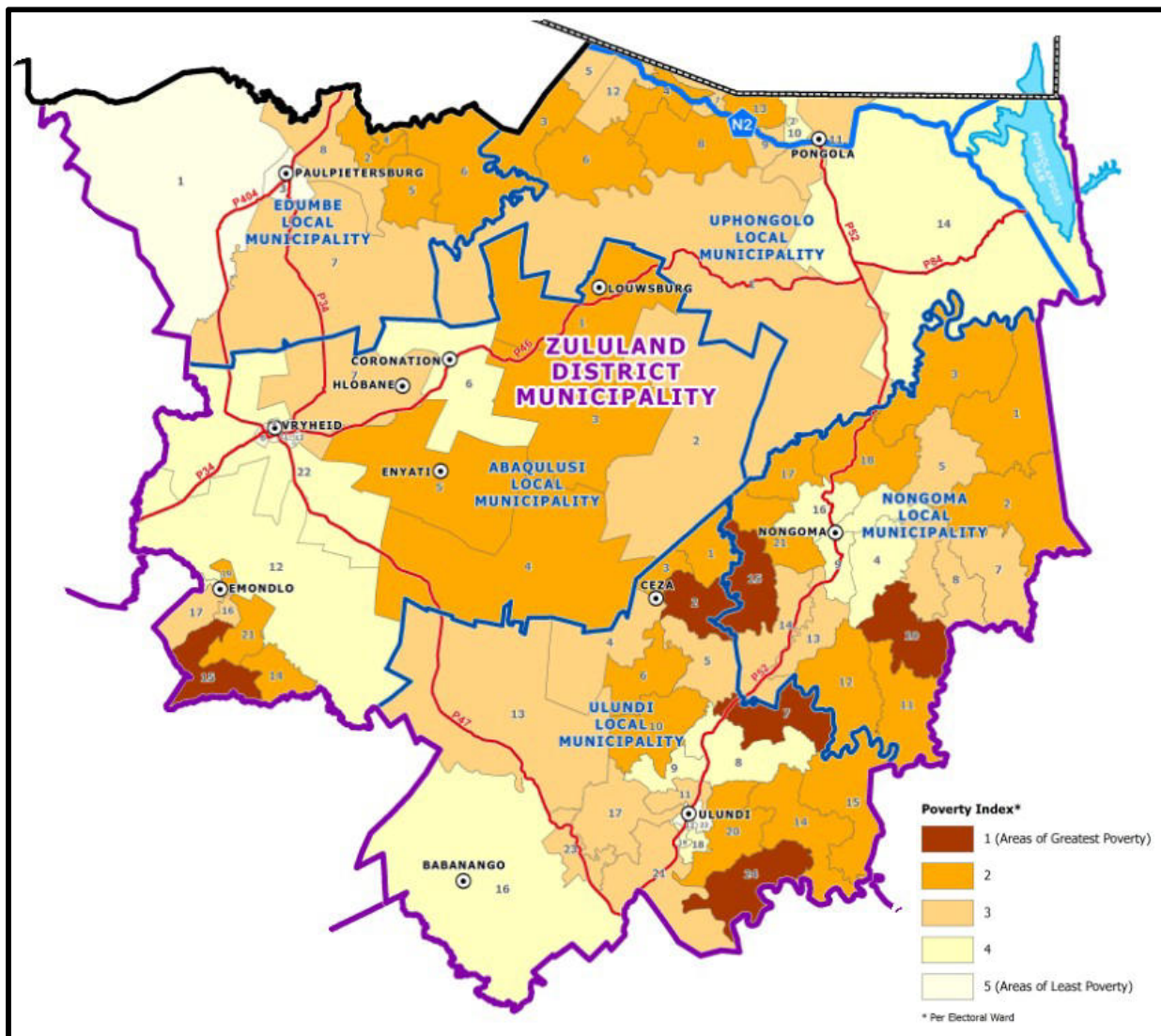


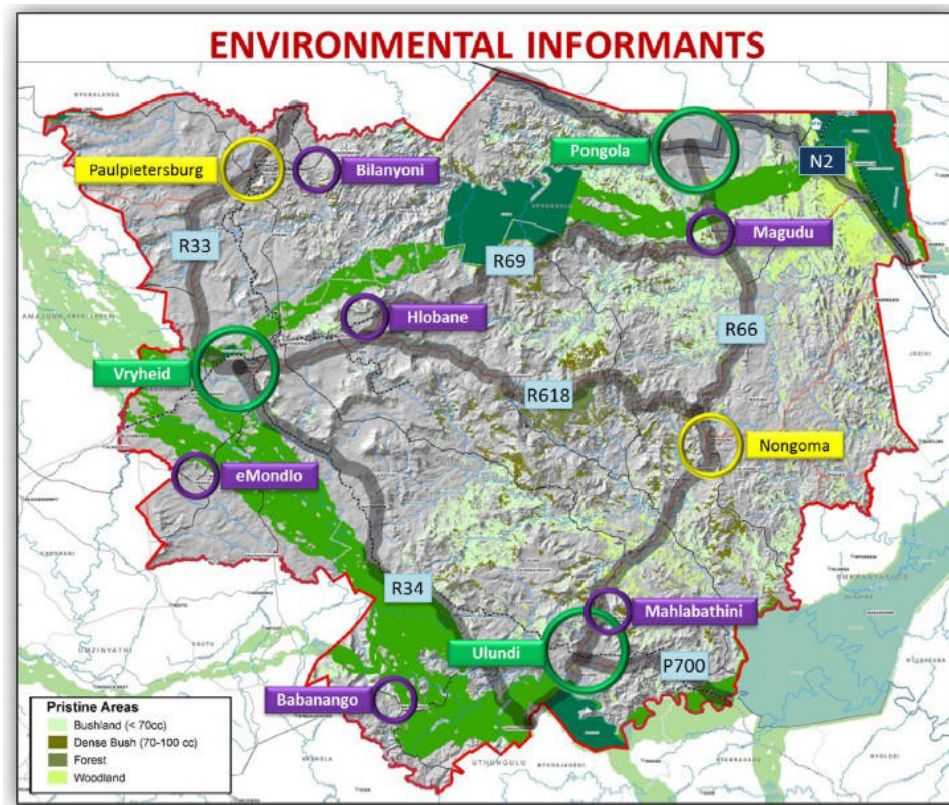
SECTION E.1: STRATEGIC MAPPING

Map 46: ZDM Poverty Index

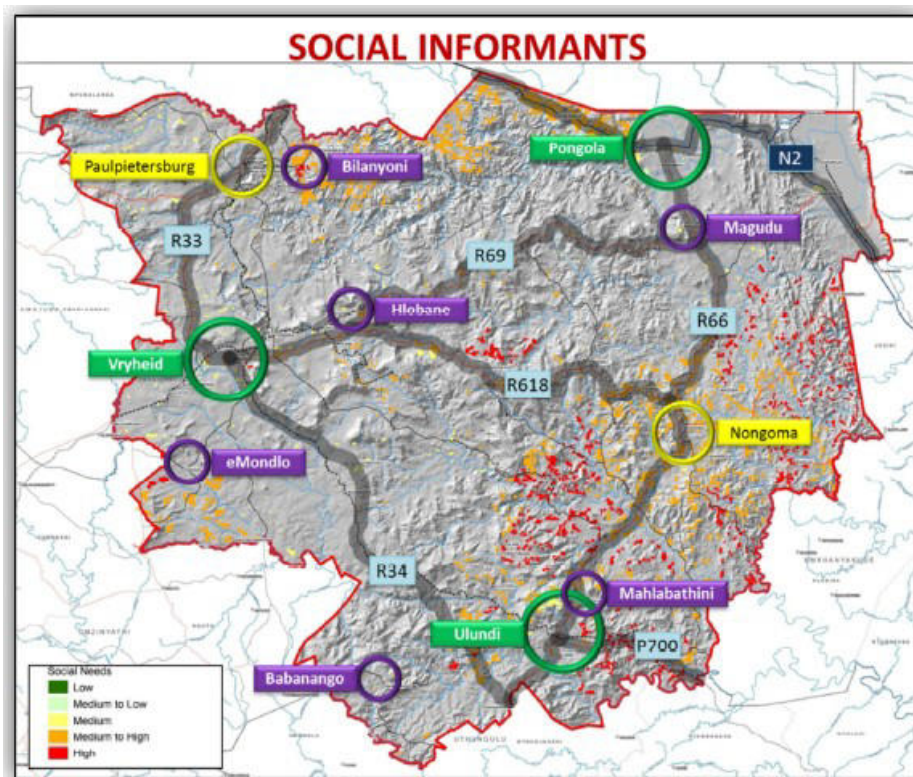


Large areas of the Zululand District Municipality are very deprived in terms of income levels, services, education and social needs. These areas are depicted on the map above.

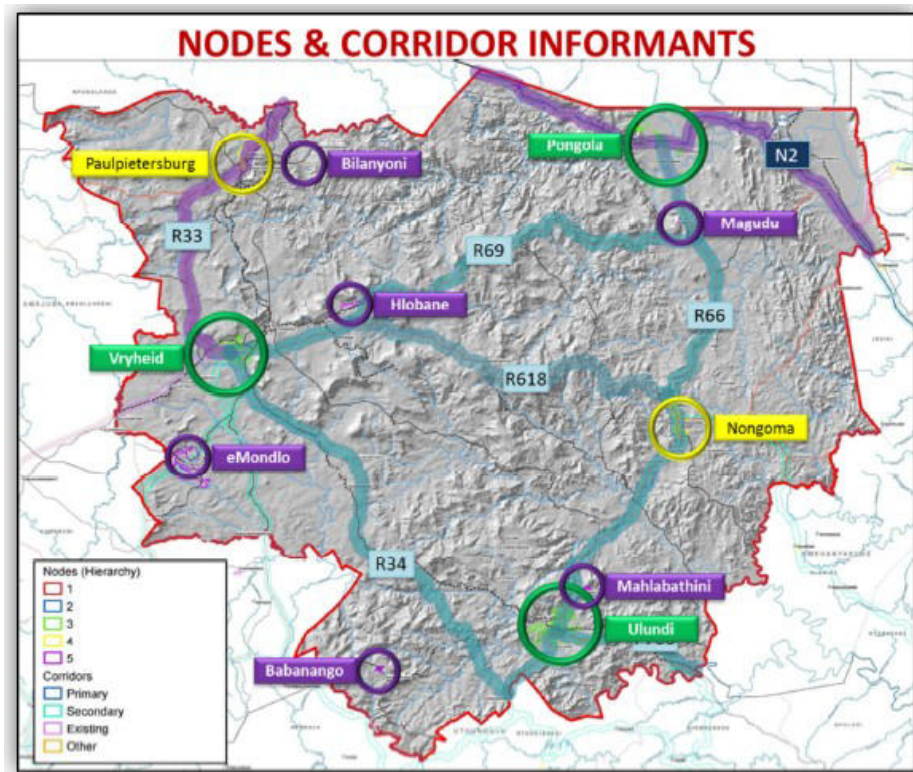
Map 47: Environmental Informants



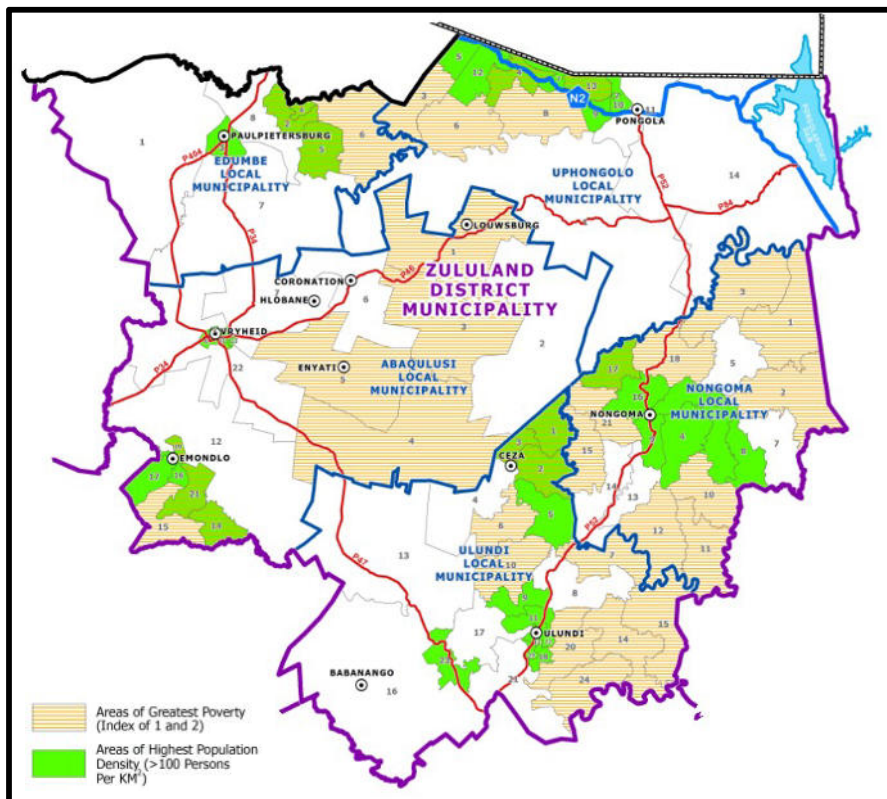
Map 48: Social Informants



Map 49: Nodes and Corridor Informants

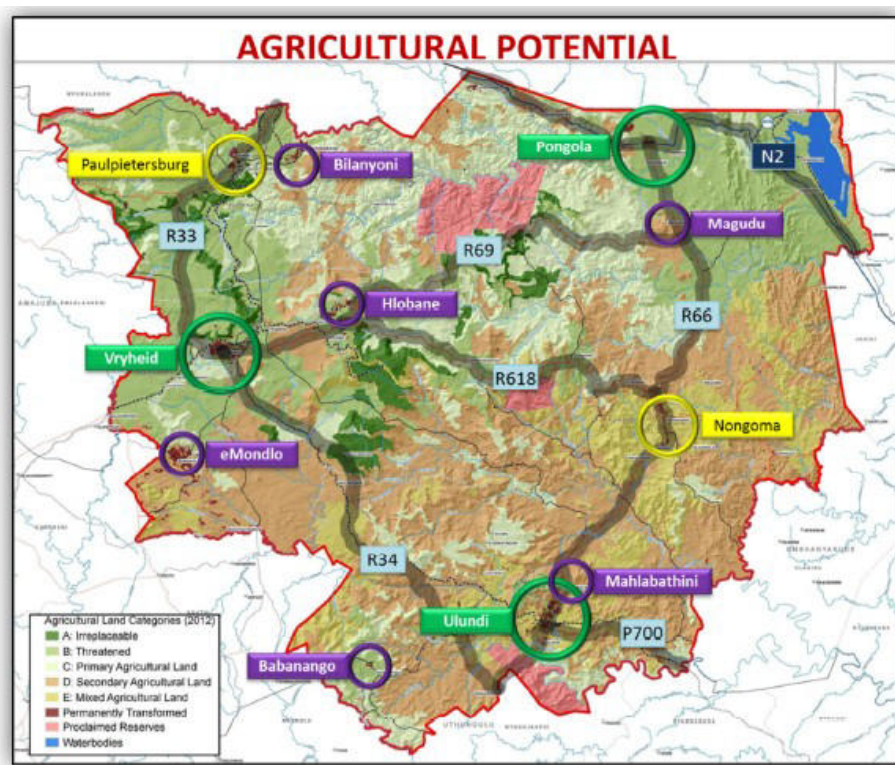


Map 50: Population Density in Relation to Poverty

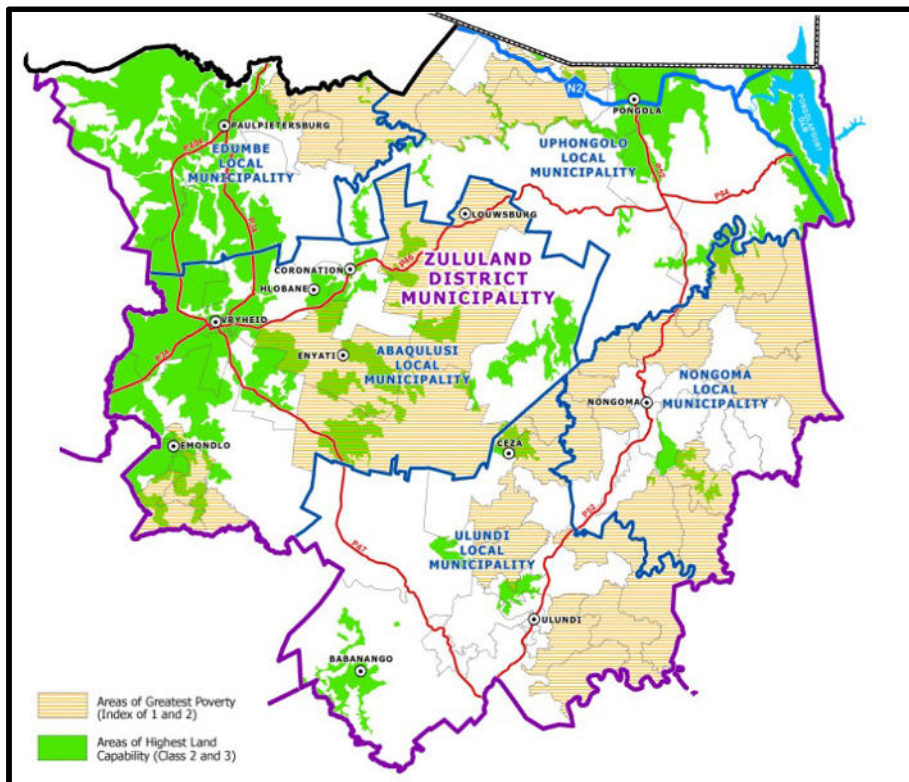


It is important to focus efforts on those areas within the Municipal Area where there are relatively denser settlement (in this instance those areas where there are more than 100 persons per km²) and also where the greatest needs are in terms of the poverty index.

Map 51: Agricultural Potential



Map 52: Areas of Greatest Poverty in relation to Areas of Greatest Agricultural Potential



It is also important to focus agricultural development efforts in those areas where there is good agricultural potential in relation to areas where poverty is the greatest. Some such areas are evident within the ZDM Area, albeit at small scale.

Map 53: Areas of Highest Population in relation to Areas of Environmental Resources

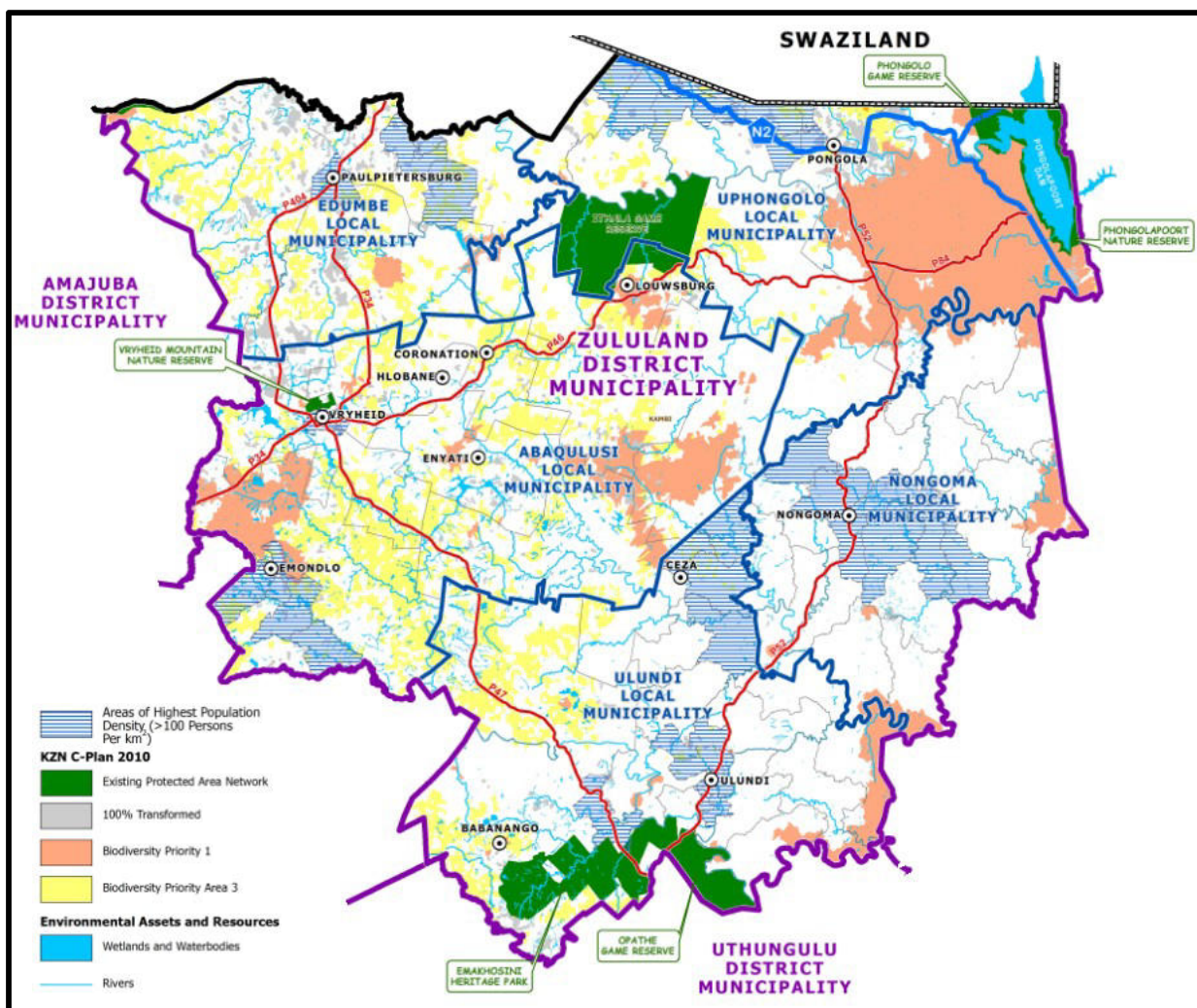
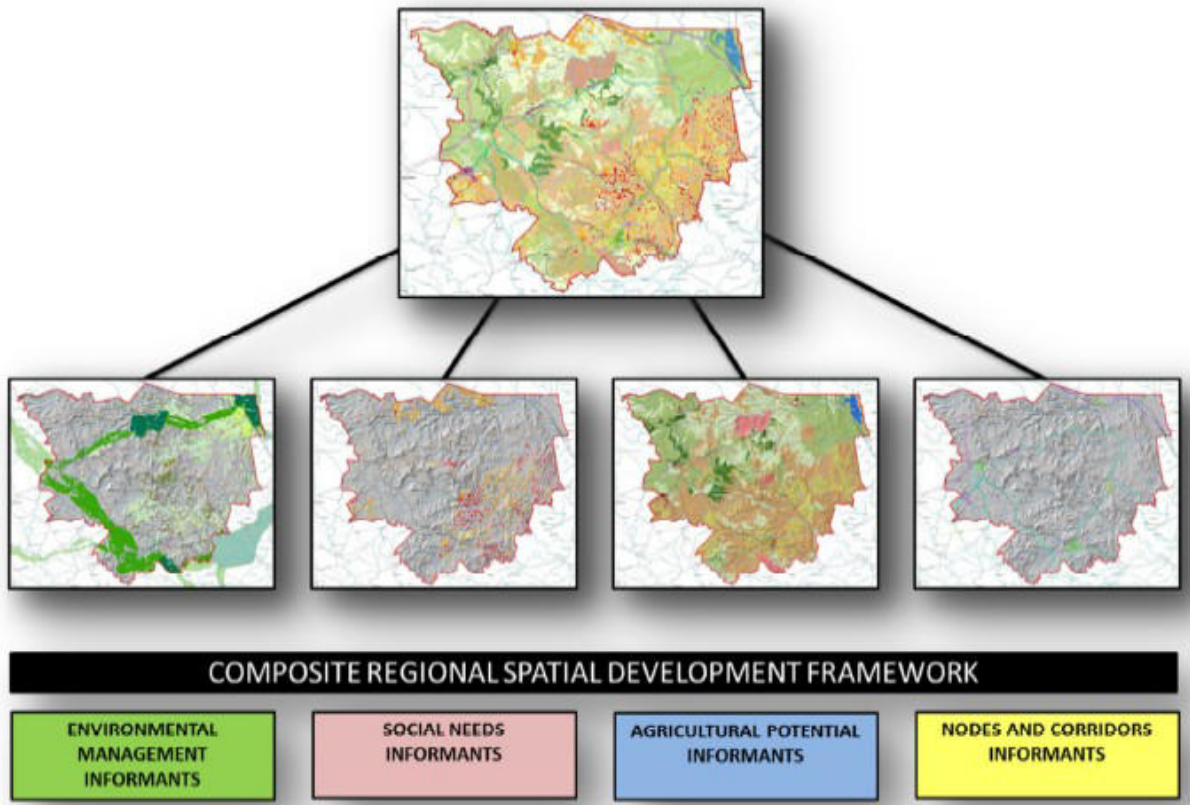
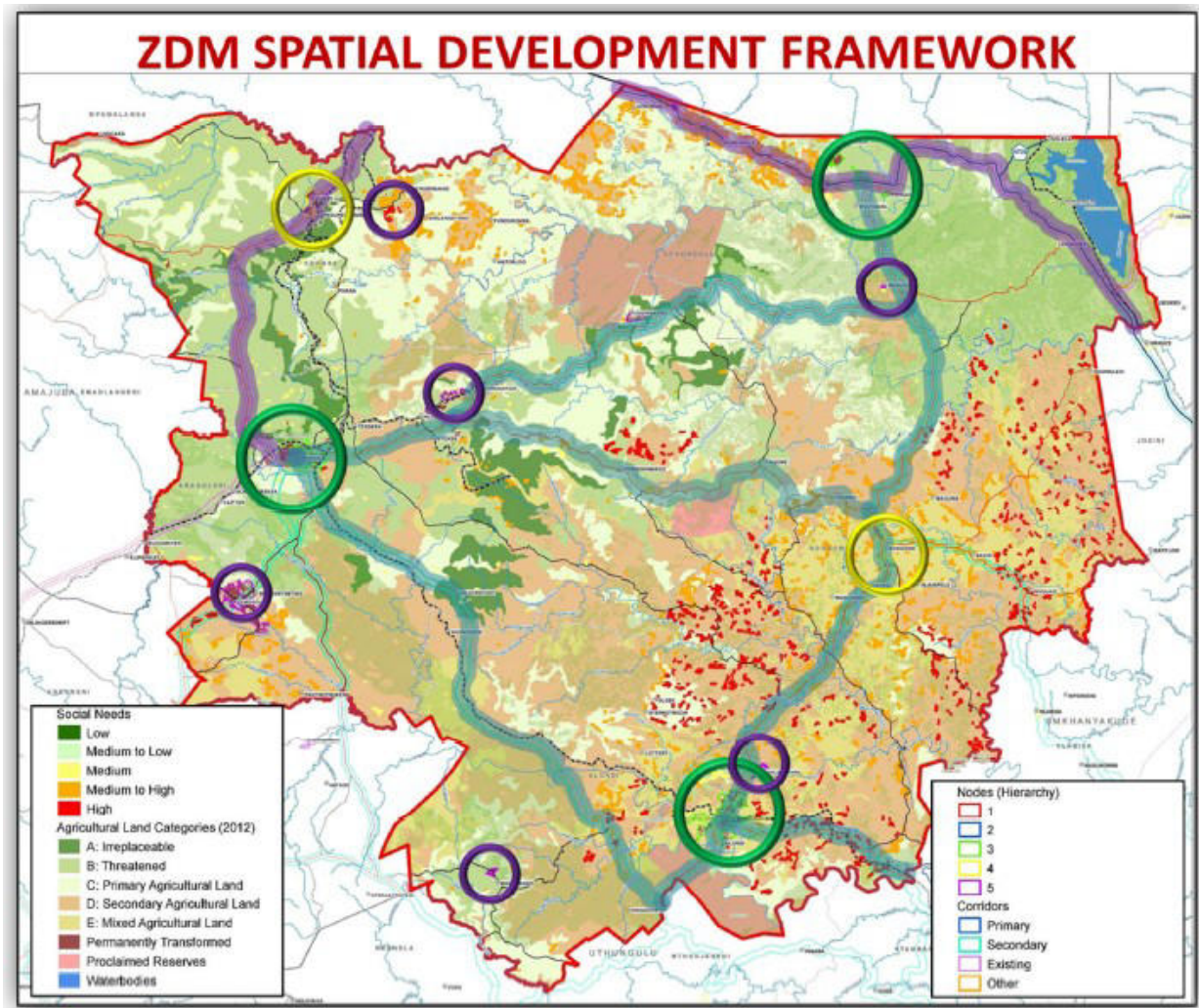


Figure 35: Composition of SDF based on Informant Maps

Fortunately within the Zululand District Municipal Area, areas of highest population density fall generally outside of environmental sensitive areas. Care also needs to be taken that where denser settled areas are in close proximity to such sensitive environmental areas.



Map 54: Final ZDM SDF



SECTION E.2: IMPLEMENTATION PLAN (ZDM SDBIP)

To be provided in the final IDP Review

SECTION F: FINANCIAL PLAN

The ZDM Financial Plan, at this stage based on the Adjusted Budget for 2014/2015 (*to be amended with the final IDP Review*), is attached at **Annexure I.5**. Also note that the Final Management Report from the Auditor-General for the year ending June 2013 is attached at **Annexure I.3**.