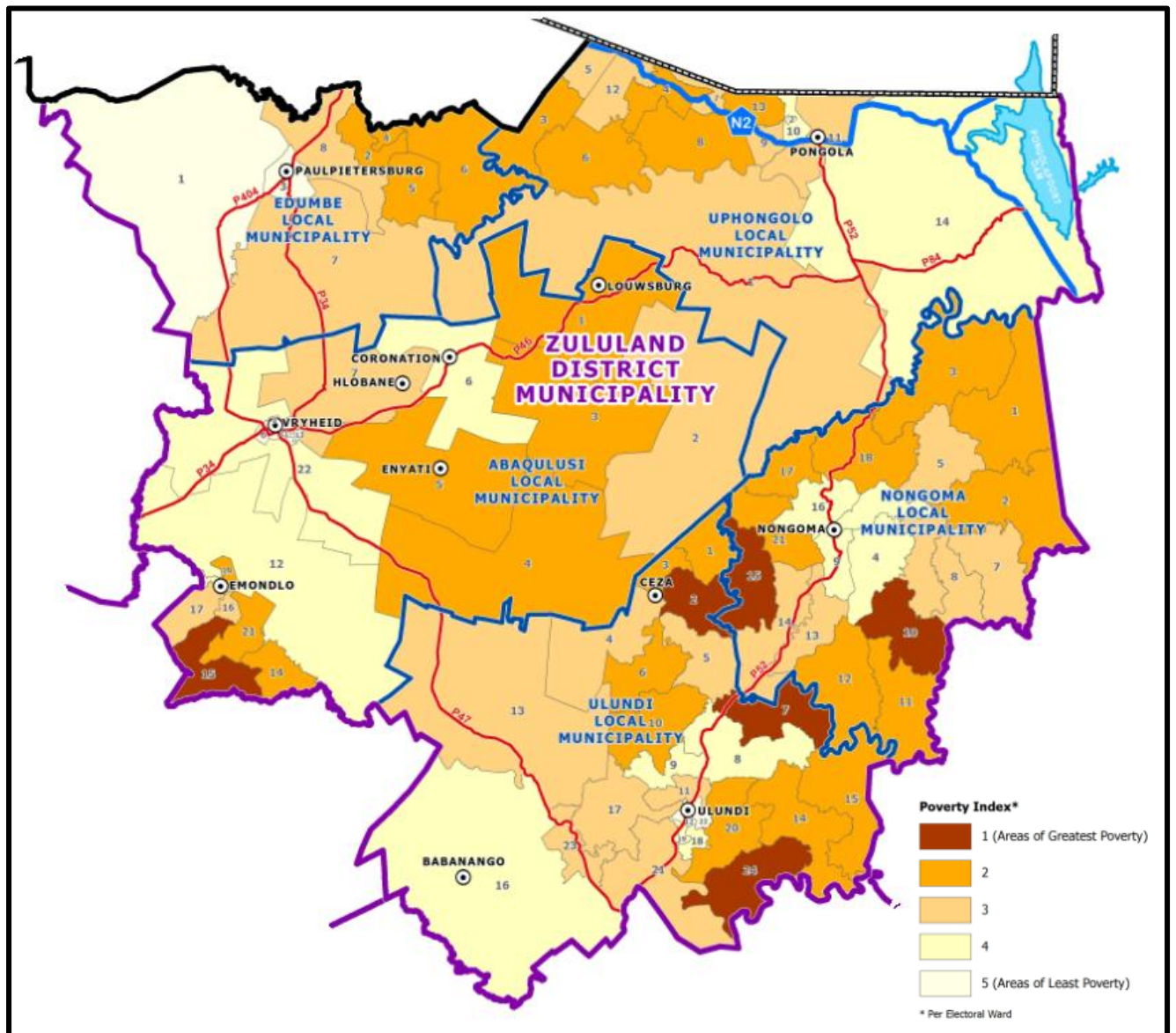


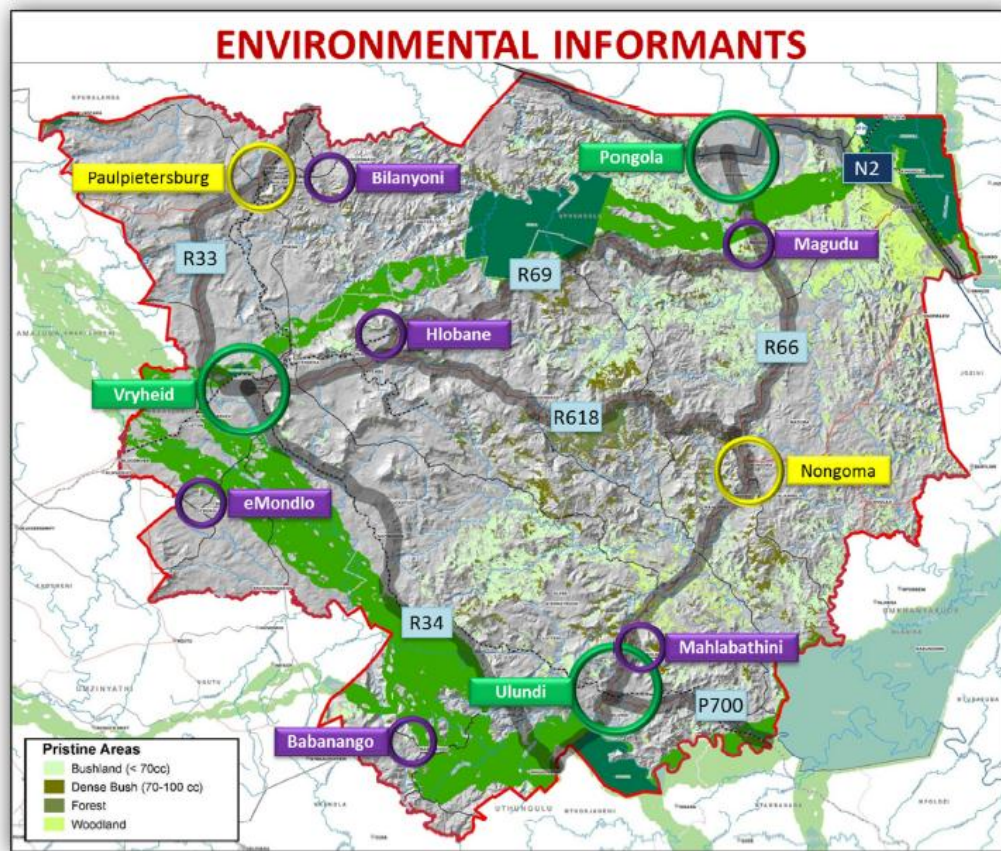
## SECTION E.1: STRATEGIC MAPPING

Map 1: ZDM Poverty Index



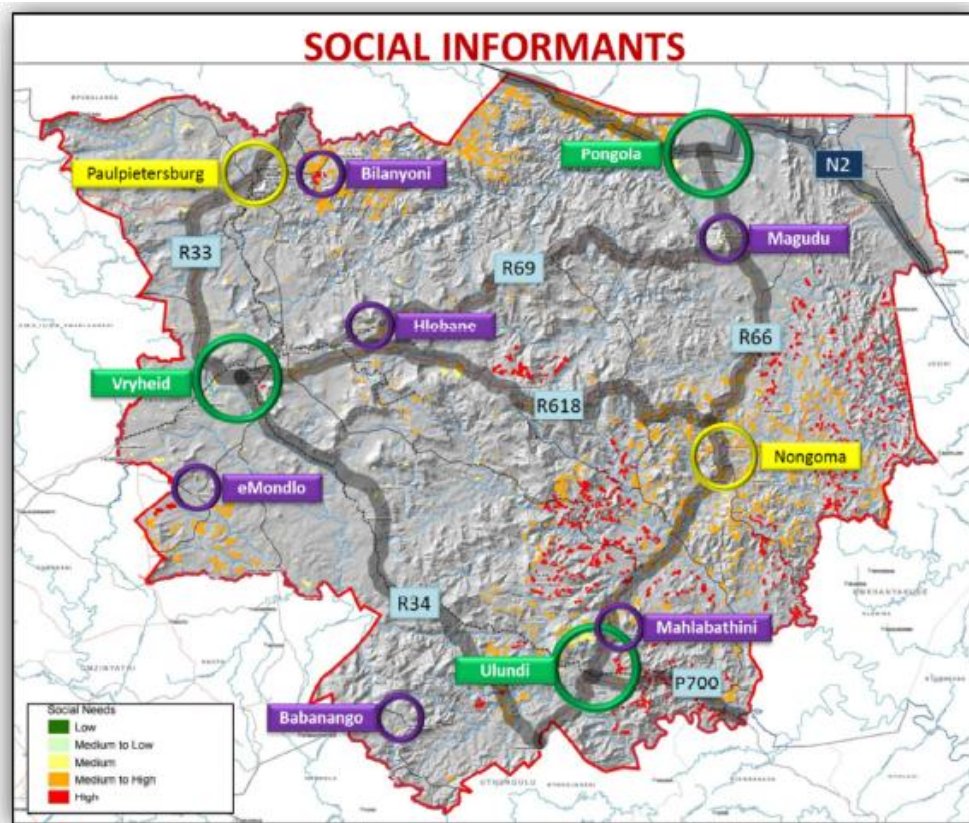
Large areas of the Zululand District Municipality are very deprived in terms of income levels, services, education and social needs. These areas are depicted on the map above.

Map 2: Environmental Informants

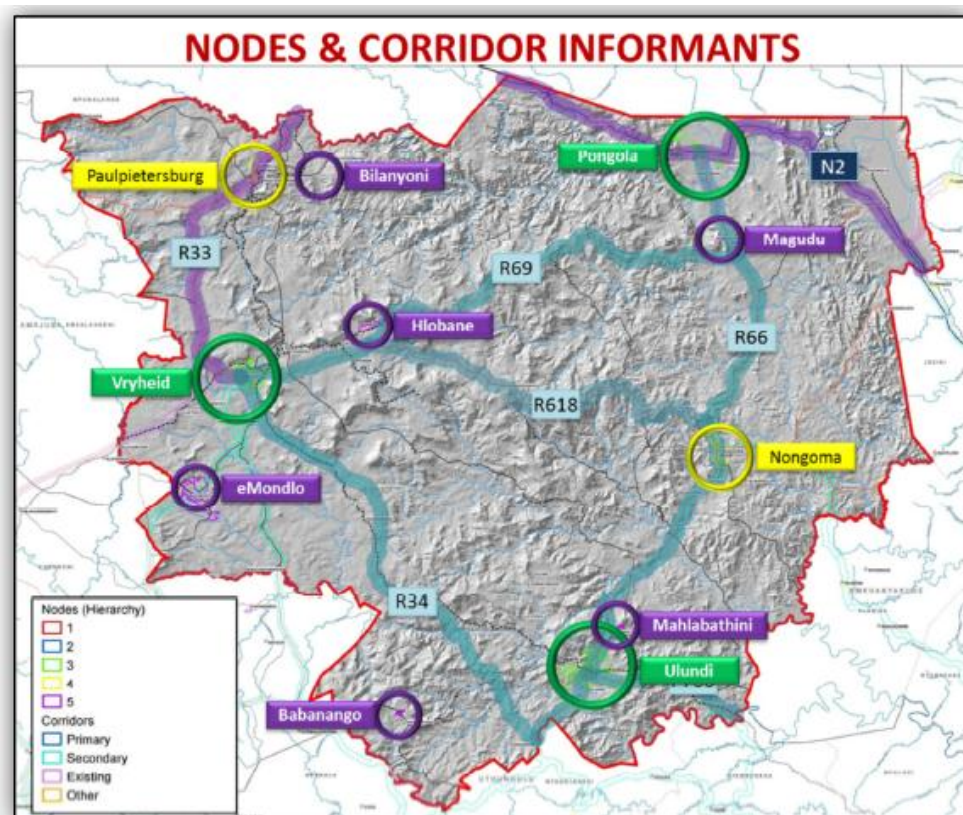


Map 3: Social Informants



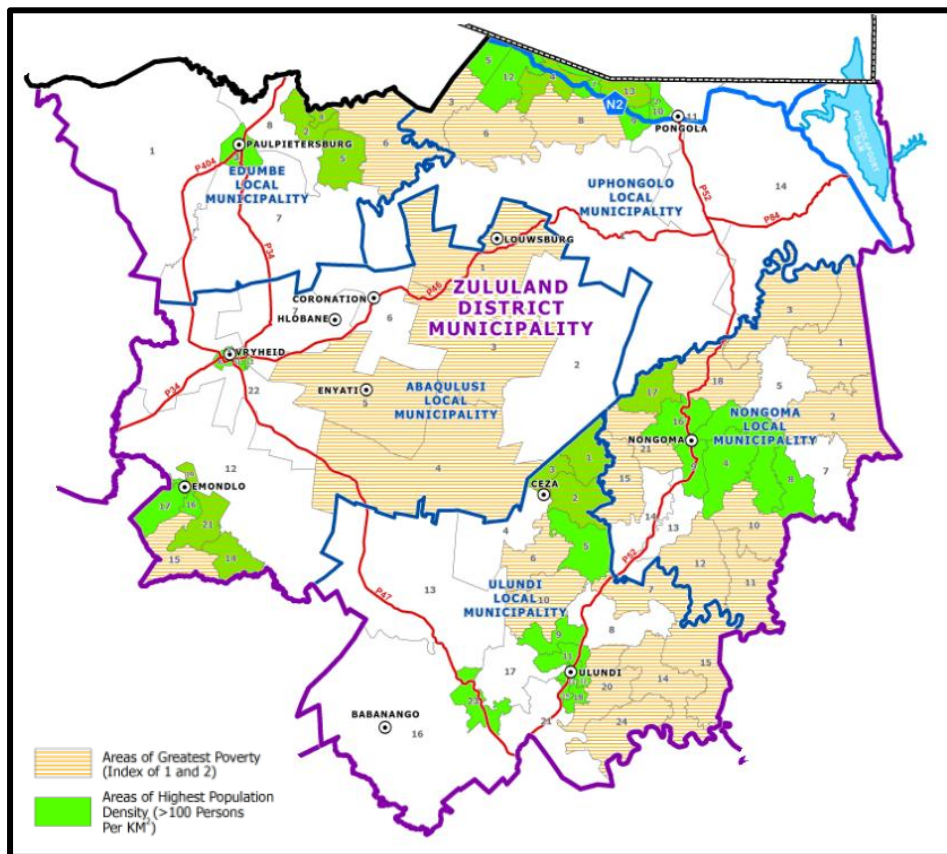


Map 4: Nodes and Corridor Informants



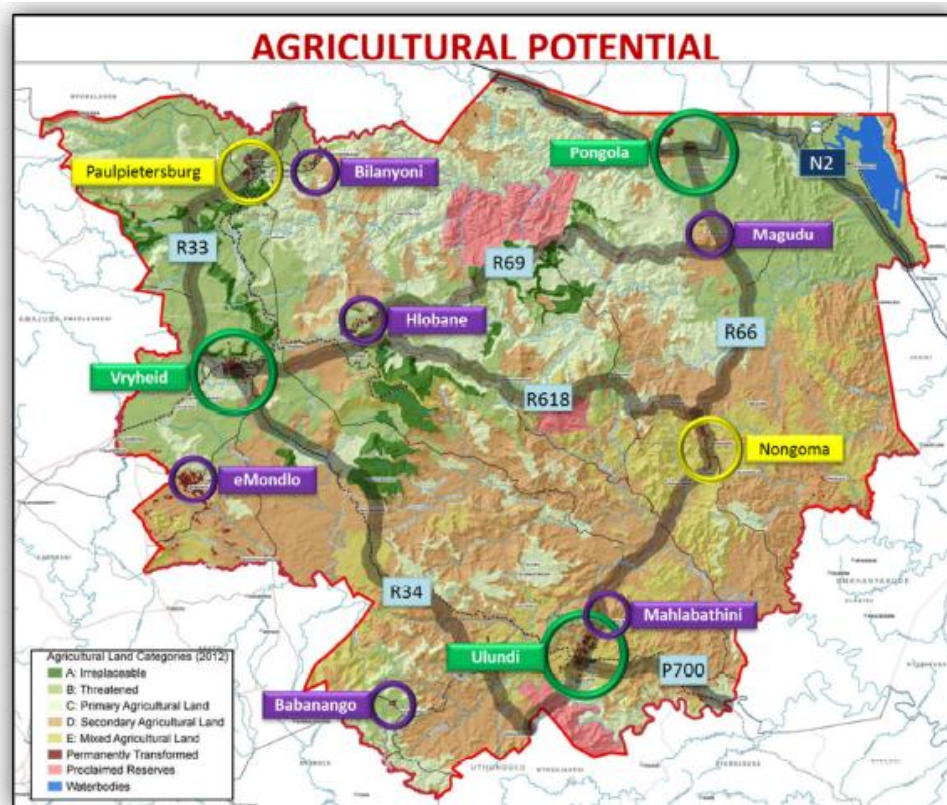


**Map 5: Population Density in Relation to Poverty**

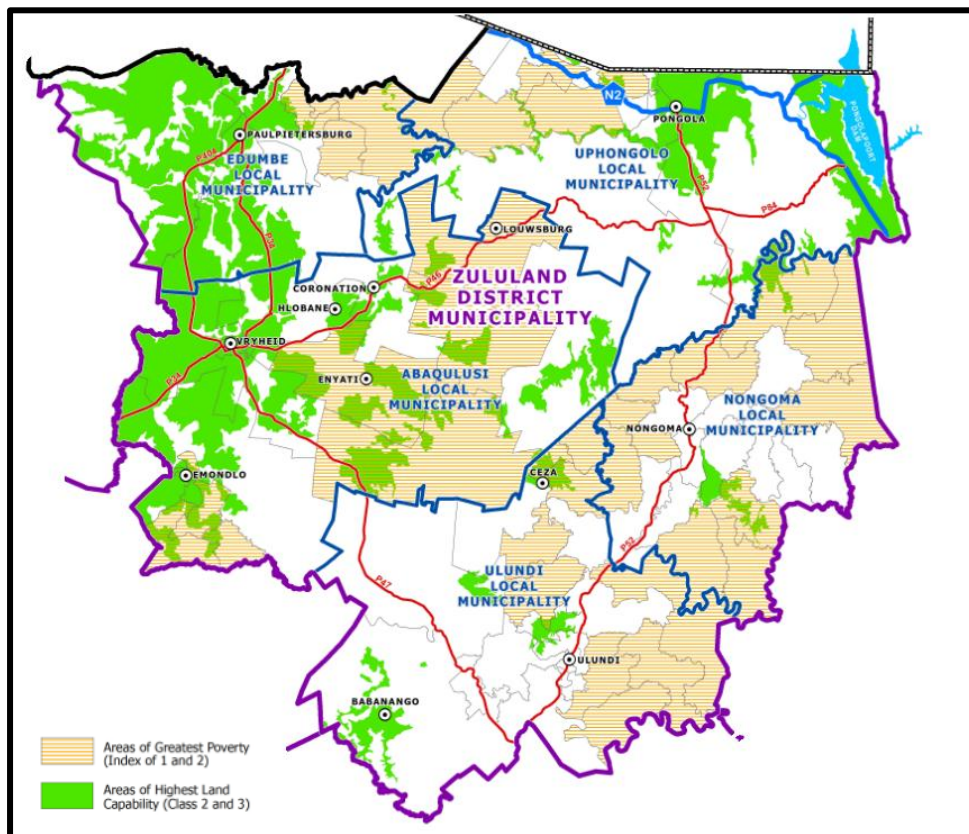


It is important to focus efforts on those areas within the Municipal Area where there are relatively denser settlement (in this instance those areas where there are more than 100 persons per km<sup>2</sup>) and also where the greatest needs are in terms of the poverty index.

**Map 6: Agricultural Potential**



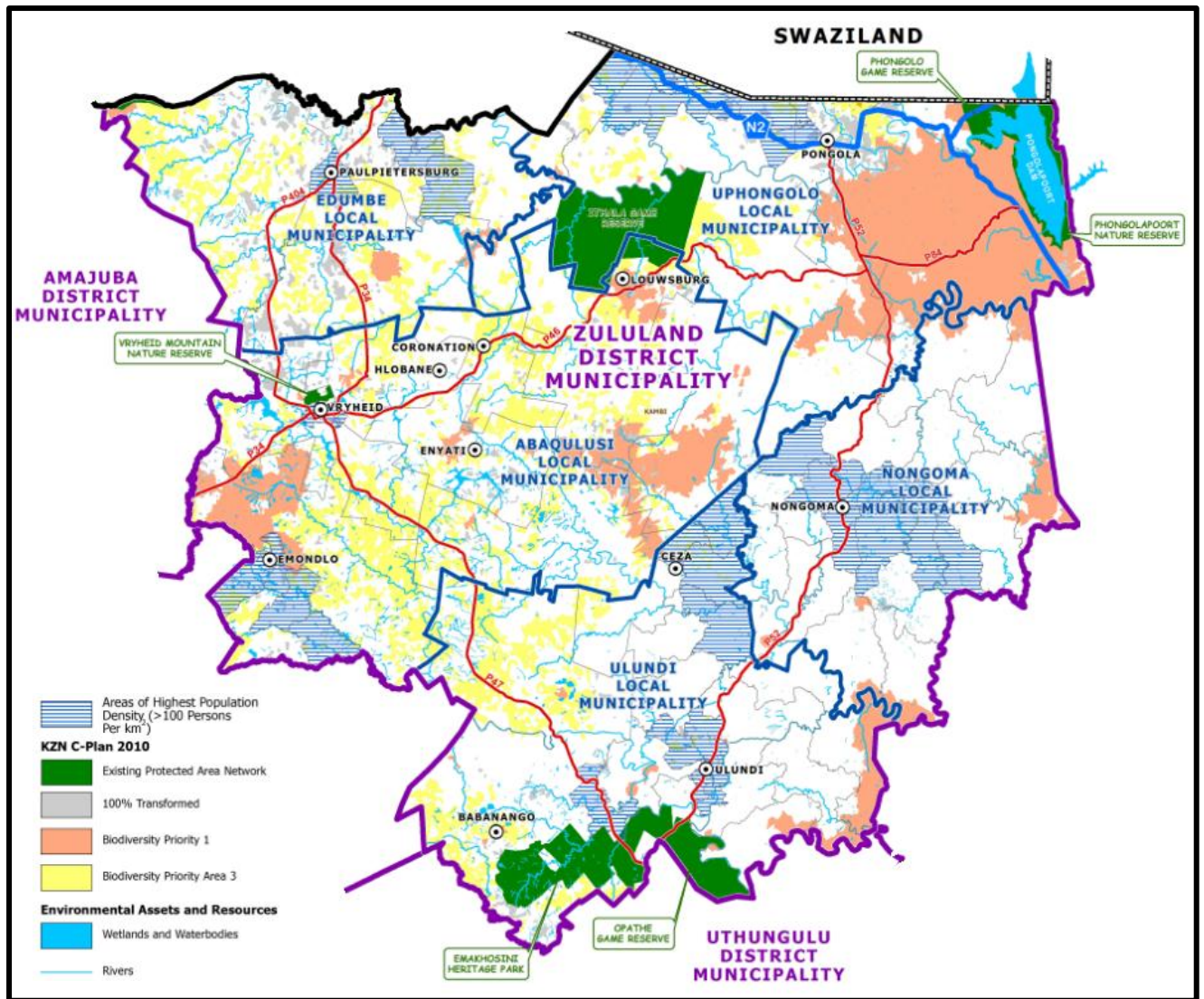
**Map 7: Areas of Greatest Poverty in relation to Areas of Greatest Agricultural Potential**



It is also important to focus agricultural development efforts in those areas where there is good agricultural potential in relation to areas where poverty is the greatest. Some such areas are evident within the ZDM Area, albeit at small scale.

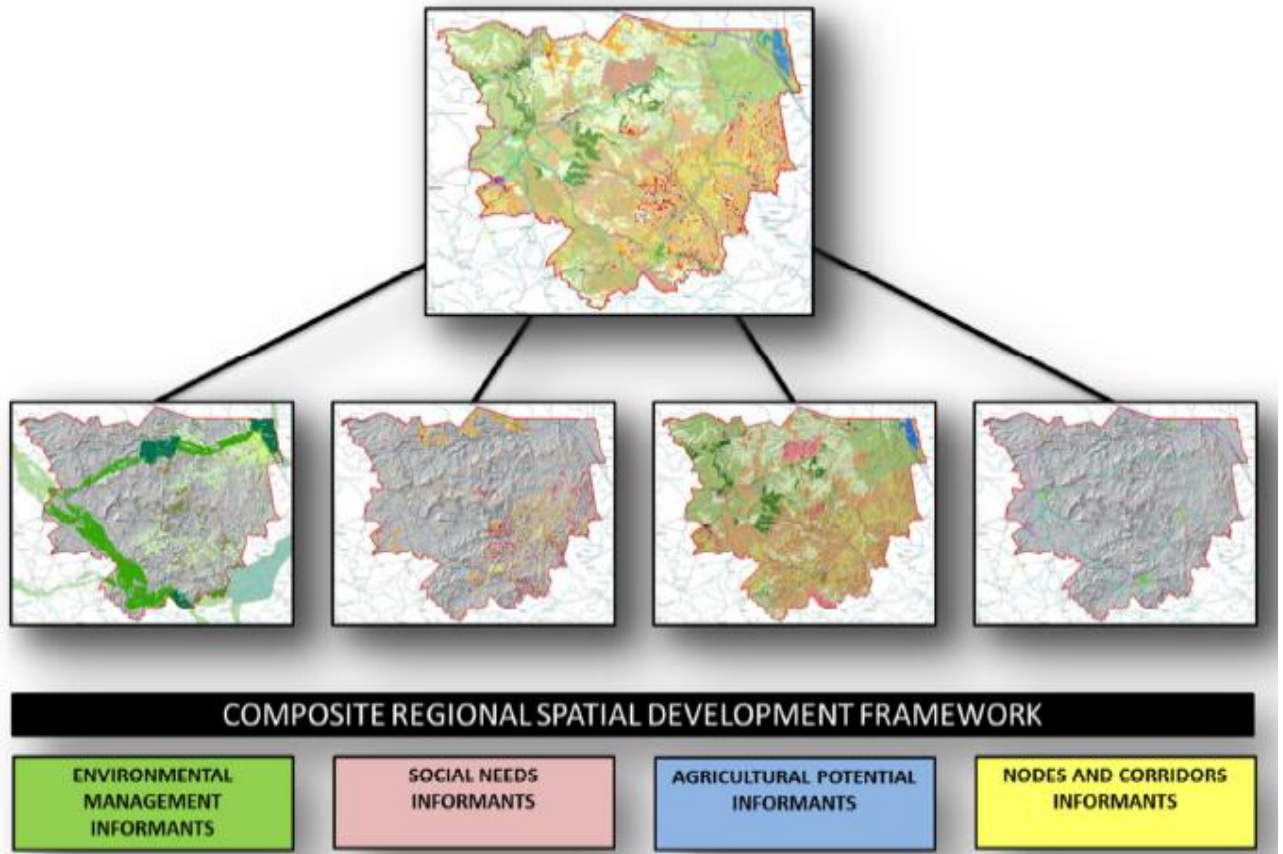
**Map 8: Areas of Highest Population in relation to Areas of Environmental Resources**





**Figure 1: Composition of SDF based on Informant Maps**

Fortunately within the Zululand District Municipal Area, areas of highest population density fall generally outside of environmental sensitive areas. Care also needs to be taken that where denser settled areas are in close proximity to such sensitive environmental areas.





Map 9: Draft ZDM SDF

