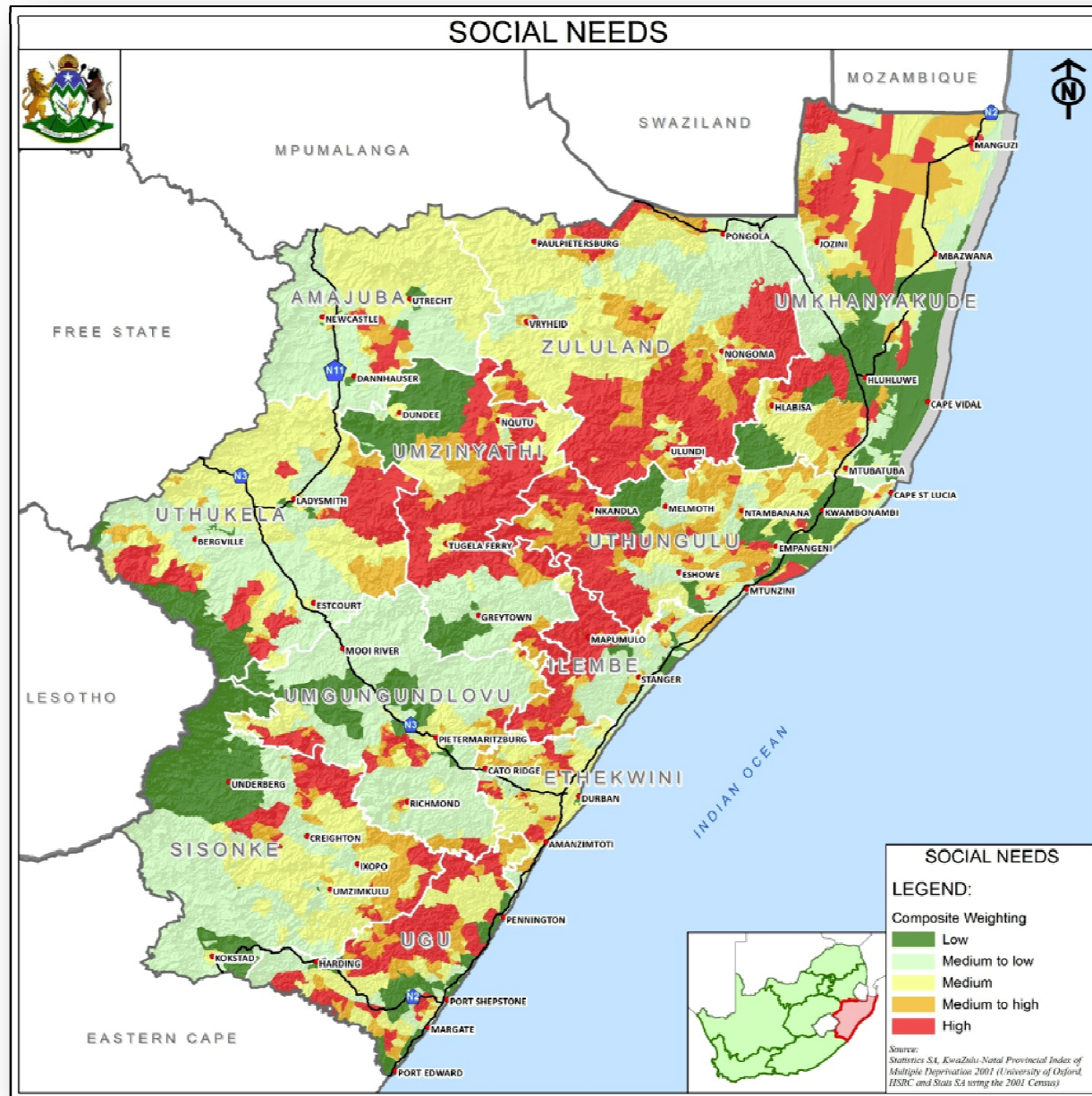


Map 1: KZN Social Needs



As can be seen from the adjacent map, the social needs of people residing in in the southern and southern, south-eastern parts, as well as a portion to the north-east of Paulpietersburg, is considered to be high.

**ECONOMIC POTENTIAL**

**LEGEND:**

**Composite Weighting**

- Low
- Medium to low
- Medium
- Medium to high
- High

Source: Cokara (2006) and Provincial Spatial Economic Development Strategy

As can be seen from the adjacent map, the only significant area which is considered to have medium to high economic potential, is the Vryheid and surrounding areas.