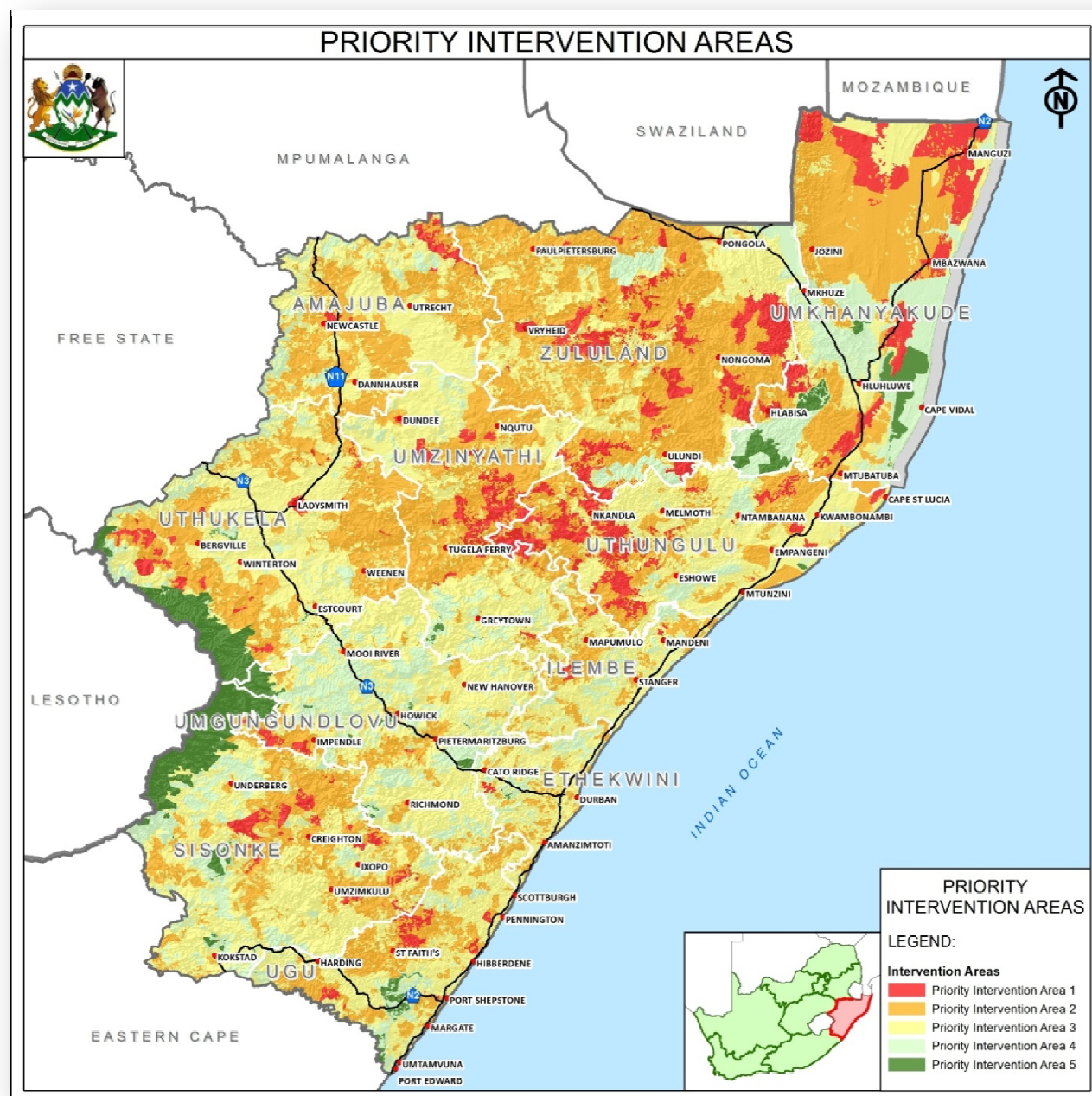


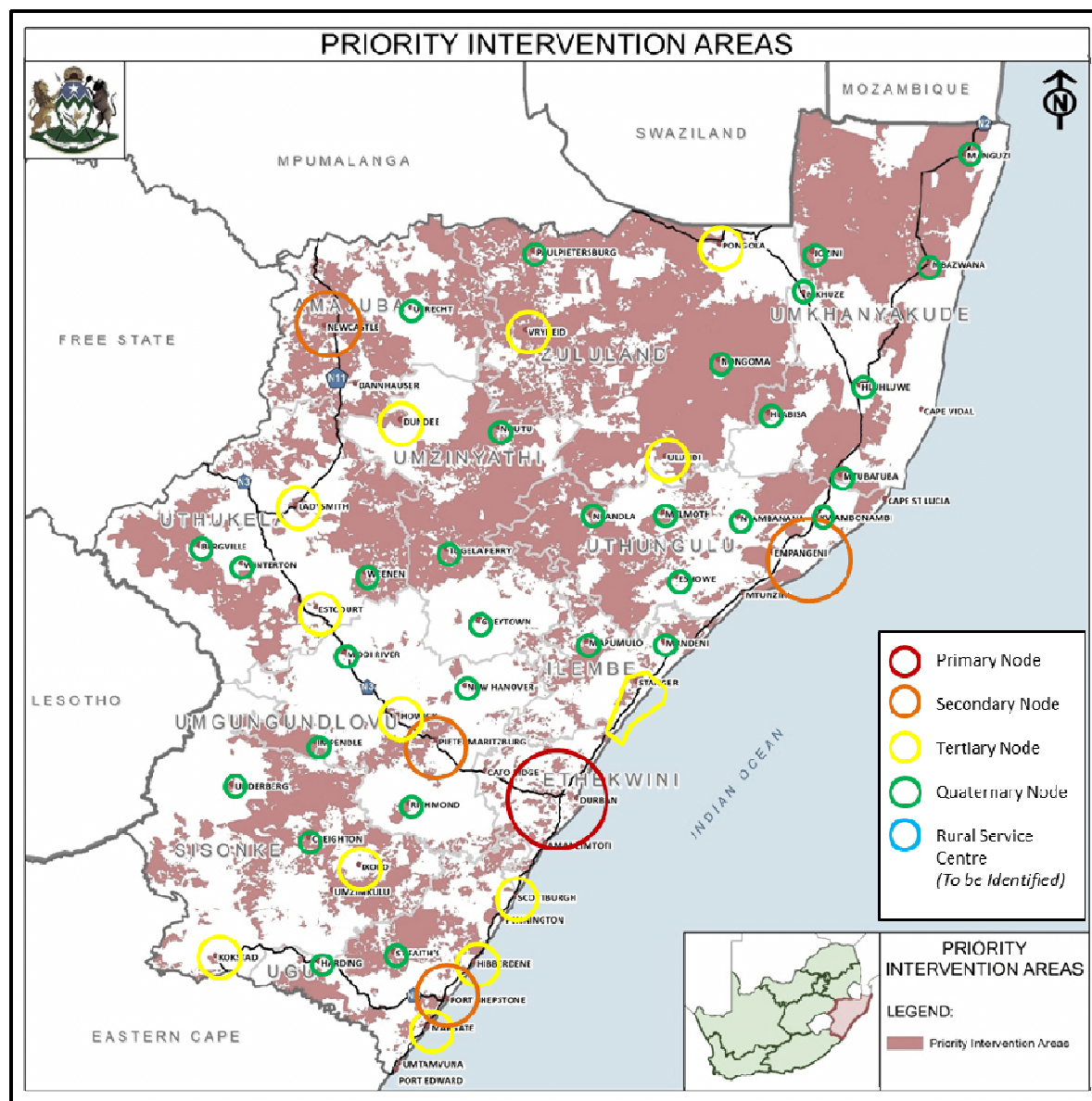
Map 4: KZN Priority Intervention Areas



Although the classification criteria used defines core areas, especially within the interior of the province, it should be noted that it is not the intention of the PGDS or the provincial spatial framework that only these core areas benefit from strategic interventions. Rather as a minimum, the Level 1 and Level 2 areas are identified as areas where urgent short term concentration and co-ordination of public interventions are required, with other intervention areas systematically being attended to. The type and extent the interventions which would be targeted at these areas, would be formulated jointly with the various district municipalities against the framework of the PGDS, its goals, objectives and envisaged interventions.

It should be noted that virtually the whole of the ZDM area is considered to be "Priority Intervention Area 1 & 2".

Map 5: KZN Nodal Hierarchy



Given the urbanisation trends as well as the already significant contribution which major urban centres such as eThekweni, Msunduzi and Richards Bay make to the regional economy of the province, as well as the fact that these areas also accommodated concentrations of poverty stricken areas, these centres should not be neglected. The Provincial Spatial Economic Development Strategy (PSEDS) has identified a hierarchy of provincial nodes which contribute strategically to the provincial, regional and local economies as well as service as vital service centres to communities. These nodes, in relation to the Level 1 and 2 Priority Interventions areas, are illustrated on the adjacent map.

It noted that 3 towns within the ZDM area are considered as Provincial Tertiary Nodes, namely Ulundi, Vryheid and Pongola.