

**ANNUAL
REPORT
Volume I**

CONTENTS

Chapter 1: Mayor's Foreword and Executive Summary

Component A: Mayors and Speakers foreword

Mayor's Foreword
Speakers Foreword

2-3
4-7

Component B: Executive Summary

1.1 Municipal Manager's Overview
1.2 Municipal Functions, Population and Environmental Overview
1.3 Service Delivery Overview

8-9
9-20
20-21

Chapter 2: Governance

2.1 Political Governance
2.2 Administrative Governance
2.3 Intergovernmental Relations National Intergovernmental Structures

22
25
26

Component C: Public Accountability and Participation

2.4 Public Accountability and Participation
2.5 IDP Participation and Alignment

28
28

Chapter 3

Human Resources
Airport Services
Organisational Development
Skills, Sickness and Suspension
Performance Rewards
Participating the Municipal Workforce
Service Delivery performance
Planning and development
Local Economic Development
Community and Social Services
Health
Financial Performance
Risk Management
Auditor General - Audit report
Audit Report Action Plan
Councillors, Committee Allocations and Councillors Attendance
Third Tier Administrative Structures
Functions of the Municipal/Entity
Audit and Performance Committee Report
Disclosures of Financial Interest
Revenue Collection Performance by Source
2012-2013 Annual Financial Statements
2012-2013 Annual Performance Report

30-33
35
36-37
38
39-42
43-51
52-78
79-82
82-89
89-90
91-94
95-101
102-105
106-107
108-111
112
113-114
115-116
117-118
119
120-197
198-219

COMPONENT A: MAYOR'S FOREWORD

VISION

The core existence of the Zululand District Municipality (ZDM) in line with the numerous forms of legislations, especially the Constitution of the Republic of South Africa, is to improve the quality of life of all our communities by providing and fast-tracking access to services like water and sanitation.



Key Service Delivery Improvements

As it is always the case, even on this financial year core function and focus has not changed. We are still concerned about the provision of clean potable water and sanitation to about one million residents of the Zululand District Municipality.

As a Mayor of ZDM, I am aware of the backlogs in the provision of water and sanitation which is due to inadequate funding from Municipal Infrastructure Grant (MIG). ZDM's intention is to eradicate these backlogs, but in order to attain that, we need at least about R3.2 billion more for our water schemes, especially for our Regional Water Schemes.

However, with the meagre grants that we get, we are trying to do all we can to deliver on our mandate which is to ensure that all our residents are provided with clean water.

On top of our core delivery function, a few years ago I started an LED programme whereby income generating projects within all our 89 wards are funded to the tune of R60 000 per ward. There is also a budget set aside to fund income-generating projects for widows' and orphans' clubs also within all our 89 wards to the tune of R20 000 per ward.

We plan to continue with these two programmes as they make a difference in the lives poorest of the poor within our communities. We are however working on a plan to ensure that all our LED-funded ward projects are sustainable.

Public Participation

Also in an attempt to resolve all water-related problems, in August last year, I hosted the ZDM Water Summit at Nongoma, where all stakeholders involved in the provision of water within our district, met and shared ideas on how this crisis could be averted.

Once again I want to assure the people of Zululand that we will continue to strive to be a corrupt-free and well-run District Municipality as we have done in the past 12 years by receiving consecutive unqualified audit reports from the office of the Auditor-General, Mr Terrence Nombembe.

This is no co-incidence as but it is as a result of putting in place good financial management systems and stringent fiscal controls that makes it easier to spot any wrong doing.

Future action

We are doing all we can to speed-up construction within our 10 Regional Water Schemes, namely: Nkonjeni, Simdlangentsha West, Simdlangentsha Central, Simdlangentsha East, Mhuze, Coronation, Mandlakazi, Usuthu, Khambi and Hlahlindlela. A large chunk of our budget goes to water and sanitation programmes.

Conclusion

Our District Municipality had other primary functions other than the provision of water which among others includes, promotion of tourism, LEDs, disaster management, ensuring good governance, health, as well as community and social services. We want to assure the people of our district that we will continue providing them with all these municipal functions to our best ability.

Cllr VZ KaMagwaza-Msibi

Mayor: Zululand District Municipality

Foreword of the Speaker of the ZDM



The year 2012/2013 financial year has been finished and the Zululand District Municipality has been hard at work as usual. Under the guidance of the astute Mayor, Councillor V Z Magwaza-Msibi, so much good work has been done; indeed challenges have also been faced and processes put in place to deal with them. Once again I find it trite to report that the Zululand District Municipality's Council of the People has, within the reasonable policy, legislative, financial resources and other resources available, took the necessary steps to ensure the progressive realization of the objects of local government within its area of jurisdiction in line with dictates of law and the wants of our people.

As a council within the local sphere of government our functioning should provide the district level macro environment to achieve the following objects:

1. Provision of democratic and accountable government for local communities;
2. Ensuring the provision of services to our communities in a sustainable manner;
3. Promotion of the developmental socio-economic environment;
4. Promotion of a safe and healthy environment; and
5. Encouraging the involvement of communities and community organizations in the matters of local government.

Council has; in line with its right to govern in its own initiative, the local government affairs of its community subject to the Republic's policy as provided for in our Constitution and applicable legislation; met as required by its policy direction and, has taken the necessary policy decisions to ensure the achievement of these objects. Council Structures of Council have met and did work. Council, the Executive Committee, the Finance Portfolio Committee, the Community Services Portfolio Committee, the Planning Portfolio Committee, the Disaster Management Portfolio Committee and the Labour Forum have met as required by legislation and council decisions. Governance is in progress. The Municipal Public Accounts Committee, the Internal Audit Unit and the Audit Committee have met and have been watchdogs necessary to ensure good governance. Councillors have also received more training to

sharpen their role of doing council oversight. Councilor attendance has been generally good. However we have some exceptional cases where we need to improve on attendance by some councillors in portfolio committees. This is indeed good for governance.

To ensure service delivery and transparency council has passed its Integrated Development Plan (IDP), Budget and the Water Services Development Plan (WSDP) to ensure service delivery within its mandate. We have seen the Honourable Mayor of the Zululand District Municipality (ZDM) delivering projects in line with this plan of action. We have seen economic upliftment projects from poverty alleviation projects to the successful development of the service centre at the Mlaba Tribal Authority, giving the people of the Zululand District an opportunity to enter the stream of the main economic activity of this country. Indeed much needs to be done in cooperation with the other spheres of government to better the lives of the people. The Honourable Mayor has done good work to fight unemployment; only to be hindered by the limited budget in her hands.

The different sectors of our society have; as usual; had a slice of development *albeit* limited to our meagre resources. The sporting community, youth, aspirant professionals getting bursaries, widows and orphans getting economic support, the elders and children, *inter alia*, getting support. In this service delivery we have our Zululand District Municipal area entrepreneurs and our unemployed public, getting works in their fields respectively. Indeed a lot of work has been done to better the lives of our people in our core activity namely: water and sanitation. We wish we could get more money to satisfy the needs of our people in this field. Research shows we need at least more than R3.2 billion to provide the satisfactory level of the delivery of water. This is a huge challenge. However, service delivery is on track.

We are happy that our mayor is attending to the views and concerns of our public. The doors of the district municipality have always been open to councillors, members of the community and community structures whenever they wanted answers about service delivery. The municipality has responded to their concerns, especially those of water and sanitation delivery. Decisions have been taken by council to ease the resolution of such matters. One example of this is the approval of the establishment of stand-alone water schemes to fast-track service delivery in areas that are not closely connected to regional schemes and where connection to major schemes will take ages to achieve.

Collectively the mayor, council and the people of Zululand as a district municipal area of jurisdiction are ensuring that development occurs to change the lives of our people.

The Honourable Mayor of our district Cllr. V Z KaMagwaza-Msibi has played a major role as motivator to council, executive committee which she chairs and our employees. Having said this it is worth noting that the Honourable Mayor has also awarded excellence for good work by members of the public in our district. We have seen top musicians, poets, actors, top players in soccer for example, media personalities and other achievers playing a major role in this country coming from this district. The mayoral awards held in December 2013 were an effort by the mayor of our district to keep this district on the map and to motivate all our people to excel in their fields of endeavour. Indeed these awards were being conferred on our people for the second year in succession. Nation building is indeed in progress. We are proud of all them and of our mayor for her acknowledgement of their efforts.

Our mayor has also shown to be a good achiever herself having done so well for the past 15 years as mayor of this district. She deserves an achievement award too.

The efforts of this municipality under the captainship of the Honourable Mayor have also seen the improvement in the functionality of Prince Mangosuthu Airport. Today the people of this district can fly to Virginia Airport in Durban, OR Tambo Airport in Johannesburg and to Pietermaritzburg Airport in the capital city of KwaZulu-Natal. We hope to see the increased tempo of economic development and government business in our district. This should also decrease the number of road accidents in our region.

Thus, the decisions of our council have not been taken in vain; our councillors have been doing their oversight role and have by and large been witnesses of service delivery. The funds of the people have been used well in line with the needs of our public as represented by their representatives in council and, in line with their plans of action namely, the (Integrated Development Plan)IDP, Budget and the Service Delivery and Budget Implementation Plan of the municipality. The funds of the public have been used well.

Indeed the good use of funds and good control thereof has been confirmed by the Unqualified Audit Report from the Auditor –General of South Africa. Good Work! However, due to some factors we could not achieve the Clean Audit Report as per the wishes of the Honourable Mayor and Council. The item on clean audit has been a standing item in our agenda. We are on course to achieve it.

We also appreciate the work of the Municipal Public Accounts Committee (MPAC), the Internal Audit Unit and the Audit Committee in this respect to ensure we achieve the opinion. The Unqualified Audit Report has still made us proud and maintains public confidence.

Given the work done it was our expectation to get the Clean Audit this financial year. So much was done by our administration under the direction of the much experienced Mr J H De Klerk. The plan of action in progress to deal with issues that hindered us from the getting the Clean Audit report assures us that the road to this opinion is not the difficult one. We applaud the efforts of our officials.

Finally the office of the Speaker applauds the good collective work of the Honourable mayor, the executive committee and its committees, council and the administration of the Zululand District Municipality. Our working in orchestra has ensured both good governance and service delivery. Our motto is: ***SERVICE DELIVERY THROUGH INTEGRITY***. Indeed the work of council and its committees, especially the executive has ensured that we are sticking to it.

The Zululand District Municipality leadership has shown that our council is **the people's choice, their voice and their future**. Being fortunately under the leadership of a humble, servant of the people, Councilor V Z KaMagwaza-Msibi, who is committed to transparent and accountable government, determined to fight against corruption and to uplift our communities, we shall deliver the much needed **SERVICES TO OUR PEOPLE THROUGH INTEGRITY**.

Aluta Continua!

Hon. Speaker Mpiyakhe kaVelemu Hlatshwayo

COMPONENT B: EXECUTIVE SUMMARY

1.1. MUNICIPAL MANAGER'S OVERVIEW



It is with great pride that I report that a lot was achieved by Zululand District Municipality (ZDM) in this financial year. As a water delivery municipality, ZDM has established 10 (ten) Regional Water Schemes that operates throughout the Zululand district to ensure that our residents access clean water.

Although there is a shortfall amount of about R3.2 billion in order for these water schemes to be fully operational and provide clean water to all our estimated one million residents, we are happy with the progress made thus far.

While providing water still remains a big challenge, the district municipality continues to launch more new water projects for various communities under our district. ZDM is also working with relevant national Government's Departments to ensure that the backlogs on the provision of sanitation facilities for our people, is addressed.

During this financial year ZDM managed to maintain our record of receiving an unqualified audit report from the Auditor-General. This means that we have now attained unqualified audit reports for the past 13 consecutive years which is a substantial achievement for any municipality in South Africa. We plan keep in place our good financial management systems as they are clearly working wonders for us. As you know, the Prince Mangosuthu Airport at Ulundi stood quiet and mainly unused after the provincial government terminated daily flights in 2003. With the help of a reputable airline company, Federal Air, in April 2012 the daily flight schedules between Pietermaritzburg, Durban and Ulundi, were resumed.

We believe that the airport is critical in unlocking access to our district, hence ZDM offered to pay for un-booked seats on the daily flights between Ulundi and Pietermaritzburg for a limited period since the resumption of daily flights schedules. It is further envisaged that ZDM will also introduce flights to Johannesburg. The provincial government provided an infrastructure grant of over R30 million for the rehabilitation of the airport.

We will continue to maintain our long established good working relationship with traditional leaders, as well as, keeping good ties with our various communities. Every week ZDM is in contact with communities (community participation meetings) to listen to their needs, because we don't want to decide what we think is right for them.

It is critical that our municipality remains committed and indebted to its main core existence which is service delivery with integrity to the people of our district.
Municipal Manager,

Mr J. H. de Klerk

1.2. MUNICIPAL FUNCTIONS, POPULATION AND ENVIRONMENTAL OVERVIEW

No.	Functions as per the Constitution of the Republic of South Africa; Municipal Structures Act	What has been done?
1.	Integrated development planning for the district municipality	Regional/Sectoral Planning, Spatial Planning Land Use Policy
2.	Bulk supply water	Provision and regulation
3.	Bulk sewage purification works and main sewage disposal	Provision
4.	Municipal (district) roads	Not yet defined
5.	Regulation of passenger transport services	planning of infrastructure Regulating (permits, control)
6.	Municipal airports (regional)	operation, management

	Municipal health services	Limited to Environmental health services and Includes regulation of Air and noise pollution, storm water management, water and sanitation, refuse and solid waste disposal
8.	Fire fighting services	Planning, coordinating and regulating Standardization of infrastructure, vehicles and procedures Disaster Management Plan
9.	The establishment, conduct and control of fresh produce markets and abattoirs serving the area of the district municipality	The need for a regional fresh produce market does not exist.
10.	The establishment, conduct and control of cemeteries and crematoria	The study revealed that there is no need for a regional cemeteries
11.	Promotion of local tourism for the area of the district municipality	Co-ordination, strategic planning
12.	Municipal public works relating to any of the above functions or any other functions assigned to the district municipality	construction and maintenance of public infrastructure and facilities

10

13.	The receipt, allocation and if applicable the distribution of grants made to the district municipality	The grants gazette for ZDM are received and spent according the grant conditions. ZDM does not distribute grants.
-----	--	---

Key issues from the table above

Water and Sanitation

In terms of municipal service provision i.e. water and sanitation, the Zululand District Municipality is a water service authority. Most of the district population is indigent which throws a challenge towards long term, sustainable water service provision. Nonetheless, this does not prevent the municipality providing the entire population in the district free basic water and sanitation.

The municipality has also regularly spent its entire MIG allocation towards establishing a reliable and quality water service to its citizens.

Integrated Development Planning

Integrated Development Planning is constantly improving with the district refining its co-ordination role in so far as infrastructure, spatial, community and environmental planning is concerned. Several structures including portfolio committees and administrative have been meeting regularly within these sectors to ensure vertical and horizontal alignment of service delivery within the district.

VISION, MISSION AND VALUES

The ZDM Council adopted the following long-term development vision.

'We are the Zululand region and proud of our heritage. We are mindful of the needs of the poor and we seek to reflect the aspirations of our communities. We are committed to responsible and accountable actions, tolerance and concern for racial harmony, the protection of our environment, and the strengthening of the role of women and youth. We will strive to improve the quality of life in Zululand by providing sustainable infrastructure, promoting economic development and building capacity within our communities.'

'WE SERVE THE PEOPLE'

Mission

To create an affluent district by:

- Provision of optimal delivery of essential services;
- Supporting sustainable local economic development; and
- Community participation in service delivery

Core Values

- Transparency
- Commitment
- Innovation
- Integrity
- Co-operation

The above vision strategic focus areas of the Zululand District Municipality are:

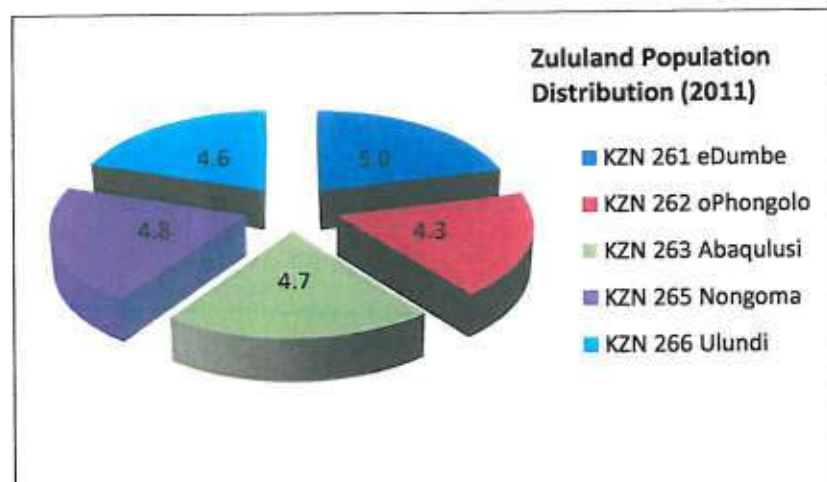
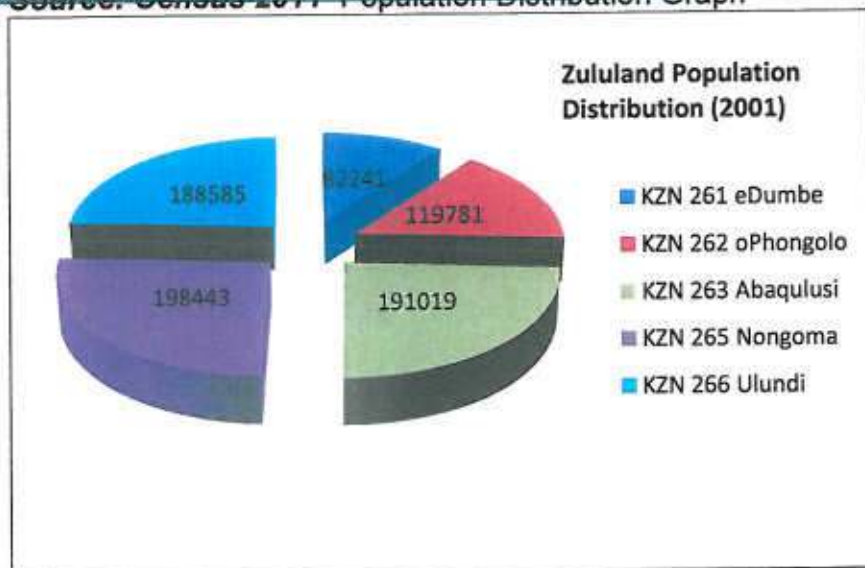
- To facilitate the delivery of sustainable infrastructure and services
- To promote economic development
- To promote social development

These focus areas are broken down to objectives and strategies, which is used to set KPI's for the measurement of the Municipality's performance, and progress with its service delivery mandate. It is important to note that the national KPAs as set that relate to community participation, good governance, municipal transformation and financial viability are considered as of a cross-cutting nature and therefore form an integral part of each of the strategic focus areas:

Population Profile

MDB Code	Municipality	Population	
		2001	2011
KZN 261	eDumbe	82241	82053
KZN 262	oPhongolo	119781	127238
KZN 263	Abaqulusi	191019	211060
KZN 265	Nongoma	198443	194908
KZN 266	Ulundi	188585	188317
DC 26	Zululand	780069	803575
RSA	South Africa	44819777	51770561
KZN	KwaZulu Natal	9584129	10267300

Source: Census 2011 Population Distribution Graph



Source: Census 2011 Population Distribution by Gender

MDB Code	Municipality	Sex Ratio	
		Males per 100 females	
Year		2001	2011
KZN 261	eDumbe	89.7	88.2
KZN 262	oPhongolo	88.3	88.5
KZN 263	Abaqulusi	91.4	90.9
KZN 265	Nongoma	80.2	83.2
KZN 266	Ulundi	81.4	82.4
DC 26	Zululand	85.4	86.3
RSA	South Africa	91.7	94.8
KZN	KwaZulu Natal	87.7	90.5

Source: Census 2011

Gender proportions in Zululand indicate that there is as higher proportions of females as compared to males. The highest number of females (131,599) is found in Nongoma and the majority of males are concentrated in Abaqulusi. Gender proportions for each municipality and from the table demonstrate that there is significant variation among the municipalities. Abaqulusi (90.9%) oPhongolo (88.5%) and eDumbe (88.2%) have relatively high proportions of females in their respective populations.

It is a known trend that women are classified under disadvantaged groups and with them being in the majority the municipality has devised several programmes and interventions to address the plight of women in the district.

Age dependency ratio

With the graph below it is evident that the Zululand District Municipality has one of the highest dependency ratios between children and adults respectively. This demonstrates a need to sustain social development programmes and support to communities by the municipality and its stakeholders (see strategic plan and budget).

MDB Code	Municipality	Dependency Ratio per 100 (15-64)	
		2001	2011
KZN 261	eDumbe	87.0	81.7
KZN 262	oPhongolo	82.0	77.3
KZN 263	Abaqulusi	73.9	70.5
KZN 265	Nongoma	103.8	88.0
KZN 266	Ulundi	91.9	81.1
DC 26	Zululand	87.9	79.2
RSA	South Africa	58.7	52.7
KZN	KwaZulu Natal	65.4	58.5

Source: Census 2011

In conjunction with its partners, the municipality has devised several programmes to address the plight of the youth including those that are dependent (see strategic plan and budget).

Socio Economic Status

The table hereunder summarizes some critical labour market indicators for Zululand

Indicator	eDumbe	uPhongolo	Abaqulusi	Nongoma	Ulundi	Zululand
Employed	7,918	19,864	36,873	14,033	24,294	102,983
Unemployed		10,846	11,886	14,536	12,017	51,842
Not Economically active	32,131	48,015	93,759	97,070	72,794	343,768
Labour force participation rate	24.60%	39.00%	34.20%	22.70%	33.30%	31.10%
Unemployment rate	24.40%	35.30%	24.40%	50.90%	33.10%	33.50%

Source: DEDT calculations based on Quantec data (2011)

Employment per municipality since 2003

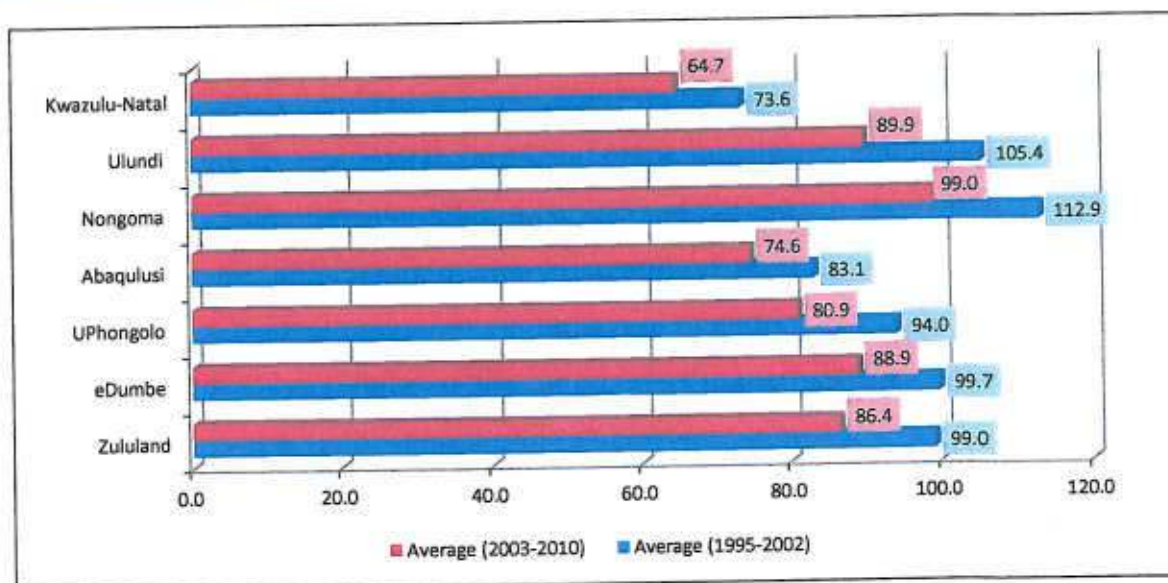
Municipality	2003	2005	2007	2009
eDumbe	10,959	10,102	9,311	7,918
uPhongolo	21,665	21,194	21,117	19,864
Abaqulusi	30,369	32,472	35,808	36,873
Nongoma	9,005	10,149	12,185	14,033
Ulundi	17,131	18,856	21,780	24,294
Zululand	89,129	92,773	100,201	102,983

The poverty rate in Zululand is 65.8% with the most impoverished communities living in Abaqulusi and Nongoma.

Dependency Ratio

The dependency ratio measures the proportion of the population that is outside the labour force and is dependent on the economic activity of those working. In South Africa, this is typically calculated as the proportion of the population between the ages of 0 to 14 plus those over 64 to those between the ages of 15-64. It is used to measure the pressure on productive population.

Nongoma and Ulundi posted the highest average dependency ratios, 112.9% and 105.4% respectively during the period 1995-2002. The same is true for the period 2003-2010, in which the two local municipalities recorded dependency ratios of 99% and 89.9%, for Nongoma and Ulundi respectively. In both periods, the dependency ratios were higher than the district average of 99% and 86.4% for 1995-2002 and 2003-2010 respectively. The graph below offers a graphic representation of the Dependency ratio.



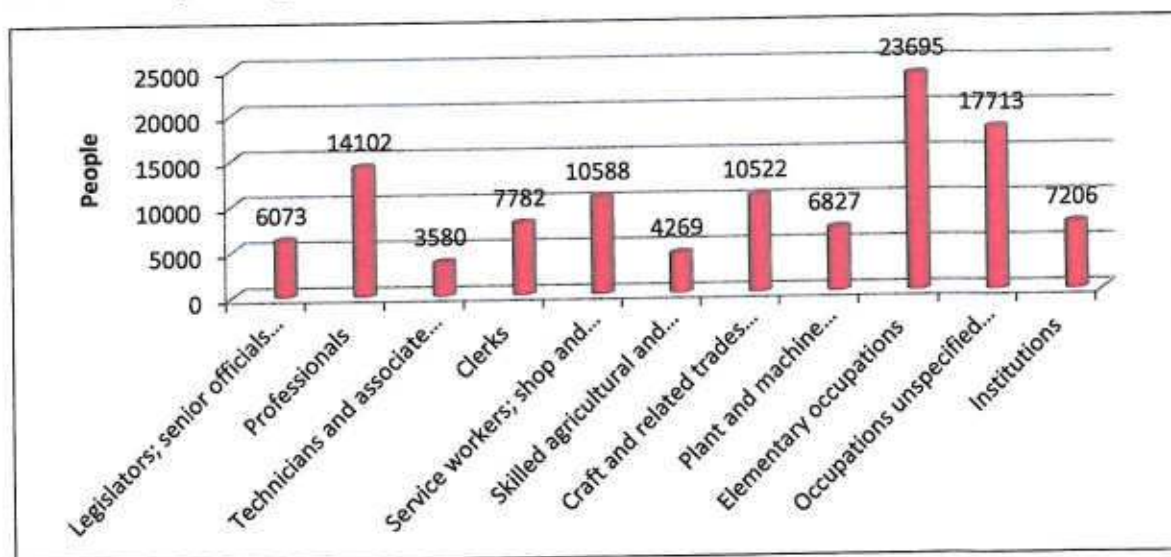
Source: Quantec 2011

HIV/AIDS

HIV/AIDS prevalence in the district stands at 34% [Department of Health, 2008], one percent higher than the national average. There is joint co-operation between the municipality and the Department of Health via IGR forums (District Steering Committee-chaired by her Worship the Mayor) and War Rooms to strategise and implement interventions to curb the scourge.

Levels of education

The following table gives an indication of the levels of education within the district.



16

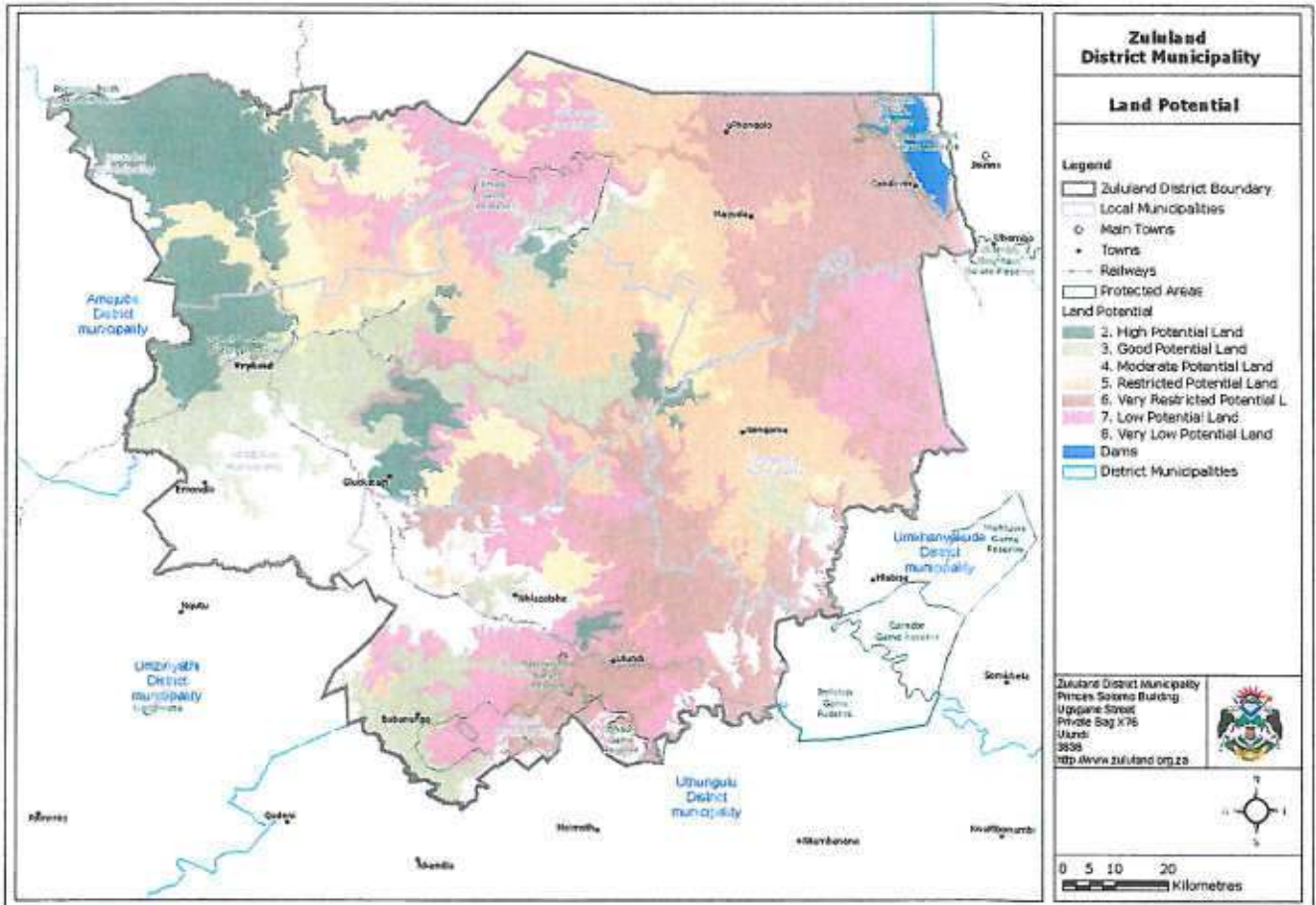
Source: Community Survey 2007

Natural Resources

The map below is an indication of the spatial location of the following natural resources across the district:

NAME	LOCATION	MUNICIPALITY	EXTENT (HA)
ITHALA GAME RESERVE	North of Louwsberg	uPhongola	26 328
NGOME STATE FOREST	NW of Nongoma	Abaqulusi	6 855
PONGOLAPOORT BIOSPHERE RESERVE	West of Pongola	uPhongolo	36 000
KLIPFONTEIN NATURE RESERVE	Vryheid	Abaqulusi	570
VRYHEID NATURE RESERVE	Vryheid	Abaqulusi	770
PONGOLA BUSH NATURE RESERVE	NW of Paulpietersburg	eDumbe	858
EMAKHOSINI HERITAGE PARK (INCORPORATING OPHATHE GAME RESERVE)	South of Ulundi	Ulundi	24000 (approx.)

Location of Natural Resources



Source: Zululand District Municipality GIS

The Zululand District is well endowed with **natural water resources**, making it ironic that the most urgent human developmental need is the provision of potable water. The District has the following notable natural water sources:

- the Pongola River in the North,
- the Mhlathuze in the South,
- and the Black Mfolozi,
- the White Mfolozi, and
- the Mkhuze rivers in the central areas.

These rivers are fed by many smaller rivers, streams and springs and it is from these that the rural communities obtain their water in a purified or unpurified form. There are three main catchments in the District namely:

- the Pongola in the North,
- the Mkhuze in the Central areas, and
- the Mfolozi in the South.

Key Issues facing the District Municipality (Extract from the 2012-2017 IDP)

- Maintain functionality of Council structures
- Ensure MTAS is complied with
- Maintenance of EDMS system thereby ensuring accurate record keeping.
- Ongoing support to the LED sub-forums to continue functioning.
- Maintenance and continual improvement of GIS system.
- Ensure continued compliance with legal financial requirements.
- Improve vertical and horizontal alignment thereby ensuring coordinated service delivery by all spheres of government.
- Prioritization of needs of marginalized groups.
- Formulation and compliance with Risk Management Framework and Strategy.
- Maintain functionality of IDP organizational arrangements internally and externally.
- To further diversify the district's economy.
- Ongoing support of tourism initiatives.
- Harness agri-processing opportunities in the district, notably venison production, leather processing and traditional medicines.
- Foster timber product ion opportunities.
- Improve rural road network to ensure improve linkages between settlements, rural nodes and municipal centres.
- Harness opportunities relating to small scale mining.
- Ensure indigent policy remains updated and relevant.
- Ensuring ongoing monitoring of water balance in rural areas.
- Commit and implement approved MIG business plans for roll-out of water and sanitation services in the district.
- Ensure disaster management forums remain functional.
- Redress disparities between levels of services and development in the urban and rural areas.
- Improve access to formal waste disposal system.
- Provision of adequate land to cater for anticipated required burial space.

- Ongoing efforts to clarify the responsibilities between Local and District Municipality as well as the Department of Transport in respect of road maintenance and construction.
- Improve the limited capacity of the electricity network in the southern portions of the District.
- Improve functionality of Council oversight committee in particular.
- LLF (Local Labour Forum) to meet more regularly.
- Risk reduction strategies and actions to be defined and implemented.
- Seek clarification in respect of the land reform programme roll-out/implementation.

1.3. SERVICE DELIVERY OVERVIEW

Service Delivery is made up of the following KPAs which are the pillars of the multi-year strategic plan of council:

1. Infrastructure
2. Economic and Social Development
3. Financial Management
4. Institutional Transformation and
5. Democracy and Good Governance

Infrastructure

Infrastructure in terms of the mandate allocated to the municipality, relates to bulk water and sanitation provision.

The Zululand District Municipality is a Water Service Authority in its area of jurisdiction. The municipality is also a Water Service Provider in all local municipalities with the exception of Abaqulusi.

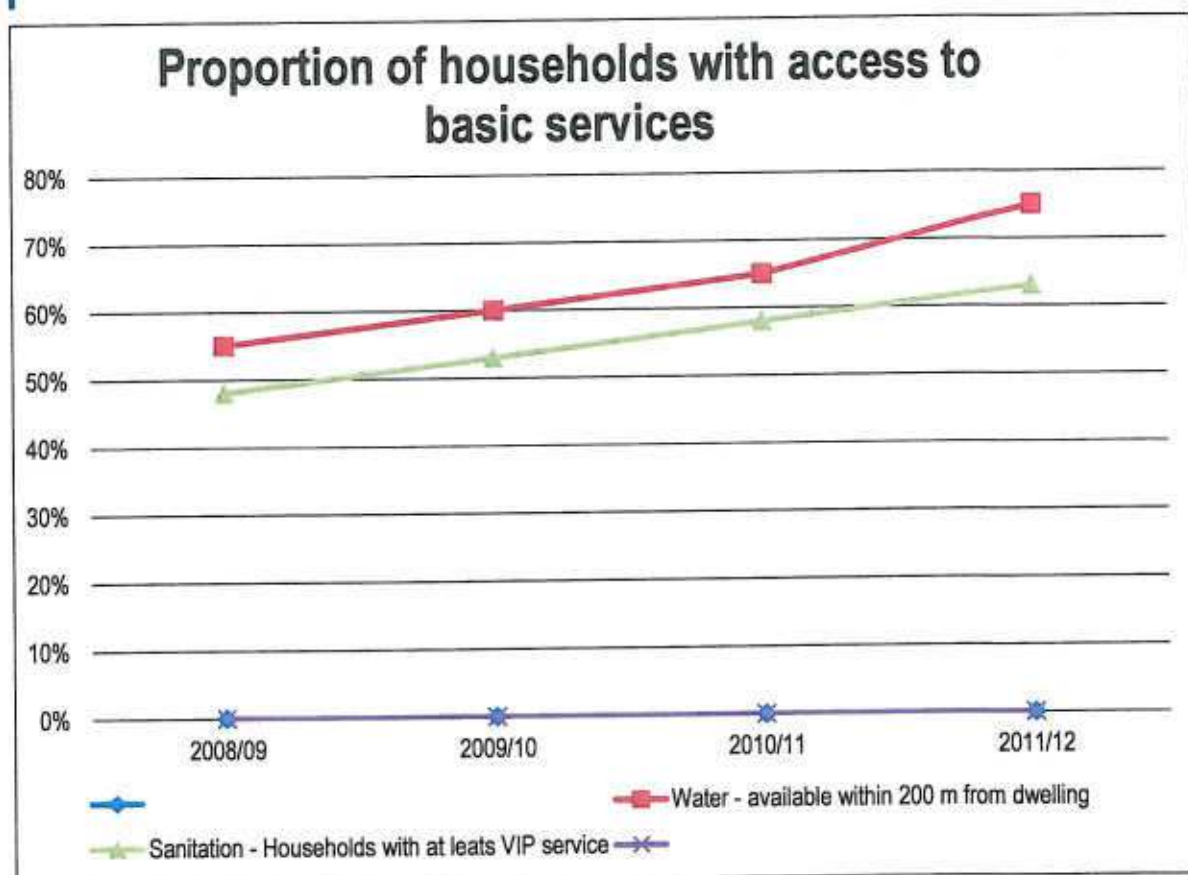
Road Infrastructure

Pending the completion of the Road Classification Programme (RISFSA) and other parallel programmes, the district is unable to perform this function.

Rural Roads Asset Management System

National Department of Transport via DORA has allocated more than R1.688, 000.00 to identified district municipalities to develop a rural road asset management system in line with the municipal finance management act. This grant will be issued every financial year for the next 3/4 years. The Zululand District Municipality is also covered under this multi-year programme expected whose expected completion is 2014/2015.

Proportion of Households with minimum level of Basic services				
	2009/2010	2010/2011	2011/2012	2012/2013
Water - available within 200 m from dwelling	60%	65%	75%	
Sanitation - Households with at least VIP service	53%	58%	63%	



For the 13 consecutive years, ZDM received unqualified audit opinions from the office the Auditor General. In the 2010/11 financial year, the issues that prevented a clean audit opinion were the material adjustments and material water loses. The 2012/13 financial year an unqualified audit opinion was received from the office of the Auditor General. To improve the nature of the audit opinion, monthly reconciliations are performed.